

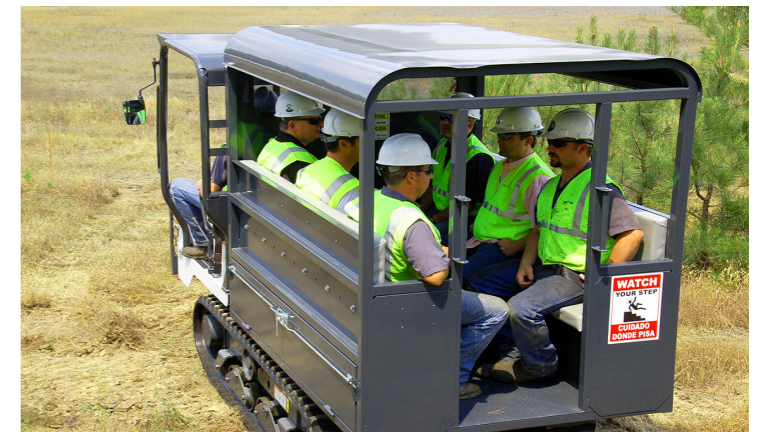


# 6-MAN TRACKED PERSONNEL CARRIER ON IHI IC-35 CRAWLER CARRIER



# SPECS

ENGINE: KUBOTA V2403-M-DI / 47 HP  
INTERIM TIER 4 STAGE 3A EMISSION  
4.3 MPH (UNLOADED) / 3.7 MPH (LOADED)  
HST TRANSMISSION SYSTEM  
WITH HST BRAKE + AUTO PARKING BRAKE  
12" GROUND CLEARANCE / 12.6" TRACK WIDTH  
OPEN CANOPY SINGLE CAB  
6 PASSENGER UNIT W/ PADDED BENCH SEATING  
ROPS TESTED & CERTIFIED  
3 POINT ENTRY / EXIT  
SAFETY BELTS  
SAFETY STICKERS  
BED LENGTH TOOL BOXES



833 - CT - SPECS  
[www.customtruck.com](http://www.customtruck.com)

\*Custom Truck One Source reserves the right to change the specification of any unit at any time without prior notice. This brochure is only a statement of general specifications on the date of this publication.

ASK ABOUT THE CUSTOMIZED AND FLEXIBLE LEASING & FINANCING SOLUTIONS AVAILABLE FROM CUSTOM TRUCK CAPITAL

