



# SPEC 315 TRACK INSPECTOR

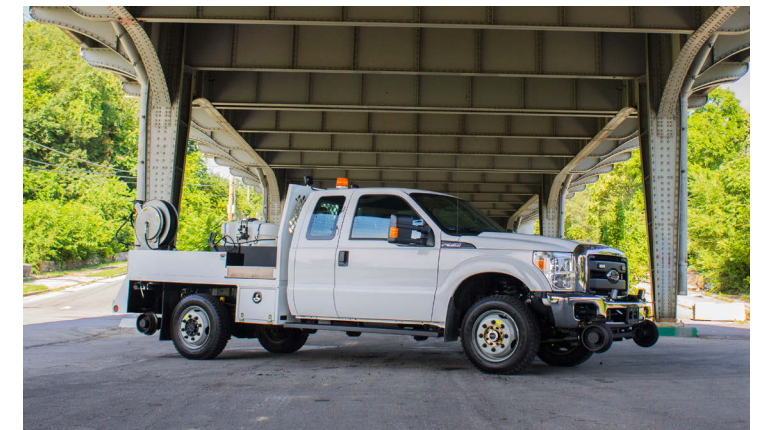
EXTENDED CAB HI-RAIL 4x4





# SPECS

BODY SPECIFICATIONS:  
 8' TRACK INSPECTORS BODY  
 INTEGRAL CAB PROTECTOR  
 GAS BOTTLE COMPARTMENT ON STREETSIDE  
 SIDE BOXES, STREETSIDE  
 LONG/SHORT BAR COMPARTMENTS ON CURBSIDE  
 UNDER BODY BOX, CURBSIDE  
 FOLD-DOWN TOOL TRAY  
 SPARE TIRE CARRIER AND LOCK  
 ANTI-SLIP ON WALKING SURFACES  
 REAR MUDFLAPS  
 RAILGEAR:  
 INSULATED  
 HYDRAULIC ACTUATION  
 STEEL TREAD GUIDE WHEELS  
 RAIL SWEEPS, FRONT  
 STRING ALIGNMENT AND WEIGHTS SET  
 TRACK TESTED  
 FRA ANNUAL RAILGEAR INSPECTION  
 ACCESSORIES:  
 REMOTE BATTERY TERMINAL AND JUMPER CABLES  
 AMBER STROBE LIGHT  
 FRONT AND REAR LED WORK LIGHTS  
 4 CORNER LED FLASHING LIGHT SYSTEM  
 BACKUP ALARM  
 TRIANGLE REFLECTOR KIT  
 2.5 LB FIRE EXTINGUISHER, MOUNTED IN CAB  
 RUNNING BOARDS, 7" GRIP STRUT STYLE  
 STAINLESS STEEL GRAB HANDLES  
 MUDFLAPS, FRONT  
 BOTTLE JACK, 6-TON  
 BREAKER BAR AND SOCKET  
 5/10 GPM HYDRAULIC TOOL CIRCUIT  
 UNDER HOOD CLUTCH PUMP  
 SPRING REWIND HOSE REEL  
 50' HOSE ASSEMBLY WITH QUICK COUPLERS  
 12 VDC OIL COOLER  
 12VDC 25 GALLON SPOT SPRAYER WITH WAND  
 OXY/ACETYLENE REEL WITH 50' TWIN 3/8" HOSE  
 EQUIPMENT OPTIONS:  
 SHUNT SYSTEM, (2) OR (4) CORNER  
 INVERTER  
 DISTANCE MEASURING DEVICE  
 SPOT LIGHT, RADIO REMOTE CONTROL  
 RAIL LUBE UNIT ILO HYDRAULIC TOOL CIRCUIT  
 WELD ALUMINUM WHEEL MODIFICATION PACKAGE  
 ALUMINUM BED WITH TOOL CIRCUIT & RAIL LUBE UNIT  
 CREW CAB (REQUIRES OVER 10,000 GVWR)



888-925-0858  
[www.customtruck.com](http://www.customtruck.com)



\*Custom Truck One Source reserves the right to change the specification of any unit at any time without prior notice. This brochure is only a statement of general specifications on the date of this publication.

ASK ABOUT THE CUSTOMIZED AND FLEXIBLE LEASING & FINANCING SOLUTIONS AVAILABLE FROM CUSTOM TRUCK CAPITAL