



# LOAD KING LK-10-DB 10' DUMP BODY

AVAILABLE ON A VARIETY OF CHASSIS BRANDS & MODELS





# SPECS

## STANDARD FEATURES:

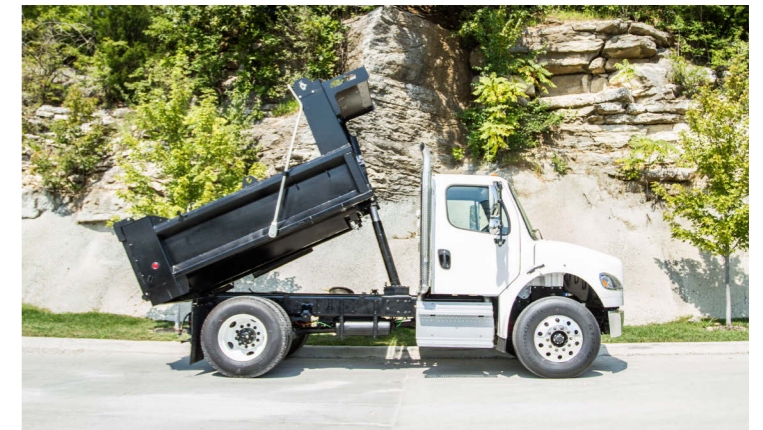
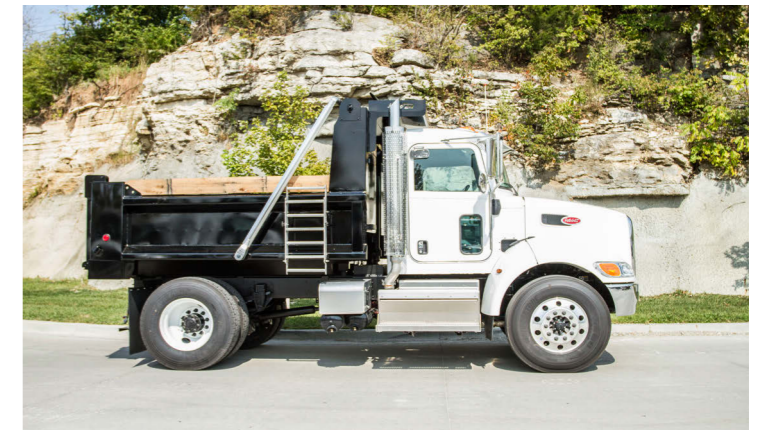
10' STANDARD LENGTH - UP TO 7 CU. YD. CAPACITY  
HANDLES SAND TO MEDIUM AGGREGATES AND ASPHALT  
UP TO 50 DEGREE DUMP ANGLE  
29" W/O SIDE BOARDS STANDARD HEIGHT  
86.5" INSIDE WIDTH  
96" OVERALL WIDTH  
36" TAILGATE HEIGHT  
CAB GUARDS 75" H - 78" W

HIGH STRENGTH STEEL BODY - 70 KSI YIELD STRENGTH BODY -  
3/16" 70 KSI STEEL FLOOR, SIDES AND TAILGATE

BODY FRONT/CYLINDER DOGHOUSE 1/4" 70 KSI  
SINGLE KICKSTAND (DRIVER SIDE)  
DUAL CYLINDER PNEUMATIC GATE RELEASE  
20T MULTI-STAGE TRUNNION MOUNTED CYLINDER  
CENTER CONSOLE CONTROL PACKAGE  
8" BOTTOM SUBFRAME - CROSS-MEMBERLESS  
FRONT SHOVEL AND SHOVEL BRACKETS  
LED TAIL LIGHT PACKAGE  
(STOP/TURN/TAIL, BACKUP, AMBER)  
AIR RELEASE TAILGATE LATCH - OVER CENTER LOCK  
PAINT - LOAD KING BLACK 2-PART POLYURETHANE  
STANDARD TARP - ELECTRIC MOTOR, MESH STYLE TARP  
2"X8" ROUGH CUT SIDE BOARDS  
25-GALLON SADDLE MOUNT HYDRAULIC TANK  
IN-LINE HYDRAULIC FILTER ASSEMBLY  
HYDRAULIC PUMP

## OPTIONS:

TAPERED SIDE BODY  
14"X14" CHUTE  
1/4" 70 KSI STEEL FLOOR, SIDES AND TAILGATE  
TARP - ASPHALT, VINYL, HEAVY DUTY ARMS  
ASPHALT LIP  
DUAL LADDER  
ASPHALT LINER  
UNDERFRAME MOUNT VIBRATOR  
2"X8" POLY SIDE BOARD  
HYDRAULIC TANK (OTHER OPTIONS AVAILABLE)  
TOOL BOXES AVAILABLE  
FLAT BLACK BODY UNDERCOATING  
PULL PLATE W/ PINTLE HITCH



888-925-0858  
[www.customtruck.com](http://www.customtruck.com)

\*Custom Truck One Source reserves the right to change the specification of any unit at any time without prior notice. This brochure is only a statement of general specifications on the date of this publication.

ASK ABOUT THE CUSTOMIZED AND FLEXIBLE LEASING & FINANCING SOLUTIONS AVAILABLE FROM CUSTOM TRUCK CAPITAL

