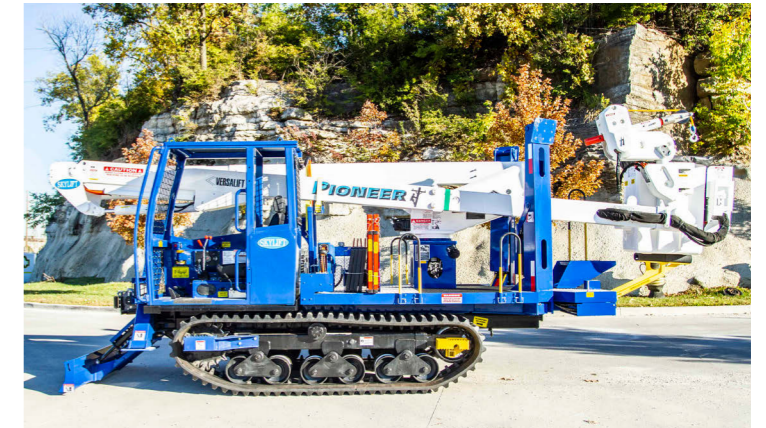




SPECS

CARRIER:	MOROOKA USA MST600 VD
SPEED:	7.5 MPH
GROUND PRESSURE:	5.2 PSI
WEIGHT (MOROOKA USA CARRIER):	17,620 LBS.
LENGTH:	24'6"
HEIGHT:	9' 8" OVERALL
WIDTH:	77"
TRACKS:	RUBBER
TILT ALARM:	FRONT TO BACK / SIDE TO SIDE
ENGINE:	76 HP KUBOTA TURBO
FUEL CAPACITY:	10 GALLON
HYDRAULIC OIL CAPACITY:	25 GALLON*
PUMP:	15 GPM GEAR PUMP
OPERATING PSI:	3,000 PSI *
PAD MOUNT TRANSFORMER DECK:	INTEGRATED / 3,000 LBS.*
OUTRIGGER SPREAD:	FRONT 7'8" REAR 14'8"
OUTRIGGERS:	A-FRAME FRONT / RADIAL REAR
OUTRIGGER SAFETY:	OUTRIGGER INTERLOCK SYSTEM
OUTRIGGER ALARMS:	AUDIBLE ALARMS ON OUTRIGGERS
GROUNDING LUG:	STAINLESS LUG ON DECK
WORKING HEIGHT:	53'
SIDE REACH:	30'
ROTATION:	CONTINUOUS
UPPER BOOM INSULATION GAP:	64"
LOWER BOOM INSULATION GAP:	12"
BASKET WORK ZONE:	UNLIMITED
JIB WORK ZONE:	REFER TO LOAD CHART
ISO CONTROL SINGLE STICK:	3AXIS / 4AXIS
CONTROLS:	FULL PRESSURE ON SIDE OF BOOM
PLATFORM:	END-MOUNTED ROTATING 24" X 30" X 42" BUCKET
PLATFORM CAPACITY:	350 LBS.
JIB RATING:	1,000 LBS
CATEGORY "C" RATING PER ANSI A92.2:	LOWER CONTROLS ABOVE ROTATION
LOWER CONTROLS OVERRIDE UPPER CONTROLS	



888-925-0858
www.customtruck.com

*Custom Truck One Source reserves the right to change the specification of any unit at any time without prior notice. This brochure is only a statement of general specifications on the date of this publication.

ASK ABOUT THE CUSTOMIZED AND FLEXIBLE LEASING & FINANCING SOLUTIONS AVAILABLE FROM CUSTOM TRUCK CAPITAL

