



TEREX GENERAL 65 DIGGER DERRICK

WITH 65.1' SHEAVE HEIGHT



SPECS

LIFTING CAPACITY: 42,110 LBS.

CAPACITY @ 10': 21,010 LBS.

MAX SHEAVE HEIGHT: 65.1'

MAX. LOAD RADIUS: 9.7'

MAX. HORIZONTAL REACH: 55.1'

MAX. DIGGING RADIUS: 36.4'

100 DEGREES OF BOOM TRAVEL (+80 TO -20)

DUAL LIFT CYLINDERS

SELF-ALIGNING SWIVEL BALL BUSHINGS

RECTANGULAR, BI-AXIAL EPOXY RESIN,

FILAMENT WOUND FIBERGLASS BOOMS

BOX FABRICATED STEEL LOWER & INTERMEDIATE BOOM

HYDRAULIC BOOM EXTENSION -

INTERMEDIATE & UPPER

FULL PRESSURE HYDRAULIC CONTROLS

FULL PRESSURE HYDRAULIC SYSTEM, OPEN-CENTER

70 GALLON HYDRAULIC OIL RESERVOIR

CUSTOM MADE/ZONED LOAD CHART

CONTINUOUS UNRESTRICTED ROTATION

15,000LB. PLANETARY TURNTABLE WINCH

PLANETARY PARKING BRAKE ROTATION

RIGHT-HAND COMMAND POST CONTROLS

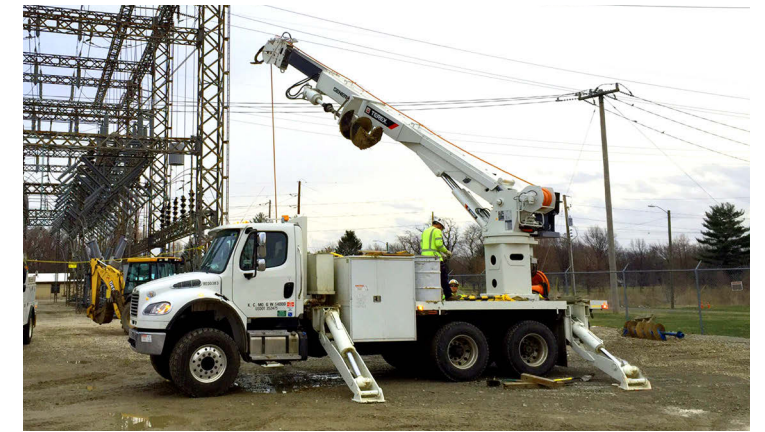
ENGINE STOP / START @ LOWER CONTROLS

BOOM ANGLE INDICATOR

OUTRIGGER INTERLOCK

MOVING OUTRIGGER ALARM

AVAILABLE ON MANY DIFFERENT CHASSIS MAKES, MODELS



888-925-0858

www.customtruck.com

*Custom Truck One Source reserves the right to change the specification of any unit at any time without prior notice. This brochure is only a statement of general specifications on the date of this publication.

ASK ABOUT THE CUSTOMIZED AND FLEXIBLE LEASING & FINANCING SOLUTIONS AVAILABLE FROM CUSTOM TRUCK CAPITAL

