



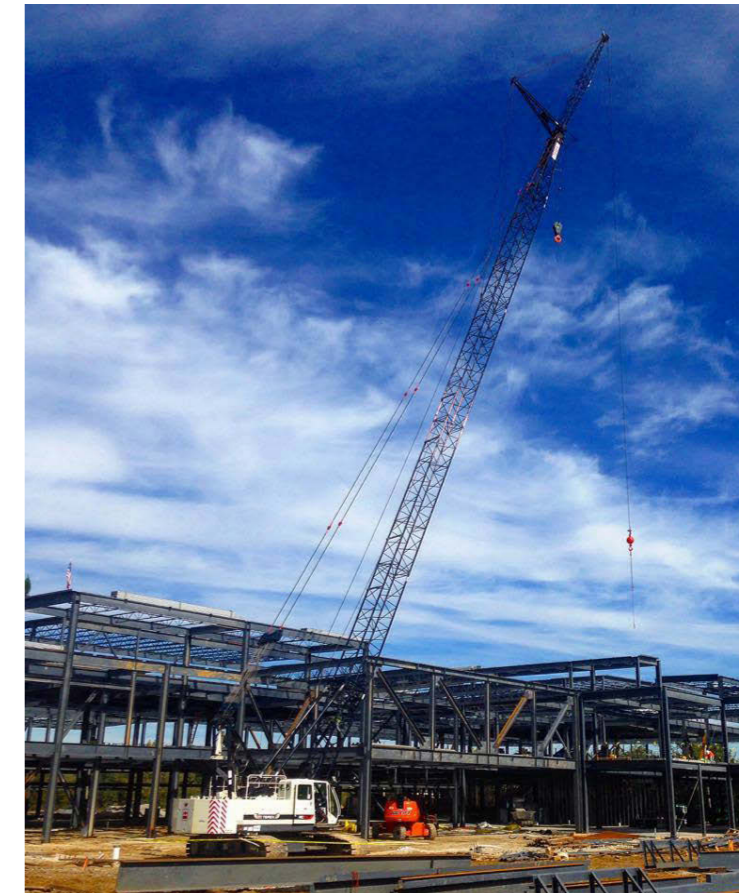
TEREX HC-110 110-TON CRAWLER CRANE

LATTICE BOOM WITH REACH UP TO 230'



SPECS

110 TONS MAX. LIFT CAPACITY
230' MAX. MAIN BOOM LENGTH
200+70' MAX LIFT CRANE BOOM / JIB LENGTH
POWER UP/DOWN & FREEFALL
ON MAIN & AUXILIARY DRUMS
40,640 LBS. MAX. SINGLE LINE-PULL,
565 FPM MAX. LINE SPEED
PREMIUM OPERATOR COMFORT IN QUIET
OPERATOR'S CAB W/ EXCELLENT VISIBILITY
SHOCKLESS STOP SYSTEM
2-SPEED TRAVEL FOR OPTIMAL SPEED SELECTION
AND POWER CONTROL, ON ANY JOBSITE
BEST-IN-CLASS TRANSPORTABILITY:
11' WIDTH, 11'3" HEIGHT
99,400 LBS. TRANSPORT WEIGHT
4-PIECE, EASY-TO-REMOVE HYDRAULIC
COUNTERWEIGHT SYSTEM
POWERFUL, HIGH-SPEED HOIST TECHNOLOGY
HEAVY-DUTY STEEL CARBODY,
DEEP BOX CONSTRUCTION



888-925-0858
www.customtruck.com

*Custom Truck One Source reserves the right to change the specification of any unit at any time without prior notice. This brochure is only a statement of general specifications on the date of this publication.

ASK ABOUT THE CUSTOMIZED AND FLEXIBLE LEASING & FINANCING SOLUTIONS AVAILABLE FROM CUSTOM TRUCK CAPITAL

