



TIGER 1061 TRACKED CRANE ON IHI IC-120

with 62,000 ft. lb. CRANE CAPACITY



SPECS

TIGER 1061 - 24V CRANE
CRANE RATING 62,000 FT/LBS

REACH: 21 FT.

LIFT CAPACITY 11,000 LBS.

LIFT HEIGHT 23 FT. (FROM BASE OF CRANE)

BOOM ELEVATION: -5 TO +75 DEGREES

CABLE: GALVANIZED 120'

HYDRAULIC PLANETARY WINCH

60 FT/MIN. WINCH SPEED

400 DEGREES OF ROTATION W/ DOUBLE REDUCTION

WIRELESS PROPORTIONAL CONTROL W/ 33' TETHER CORD

IHI IC-120

CUMMINS QSL9 / 289 HP / TIER 4 EMISSION

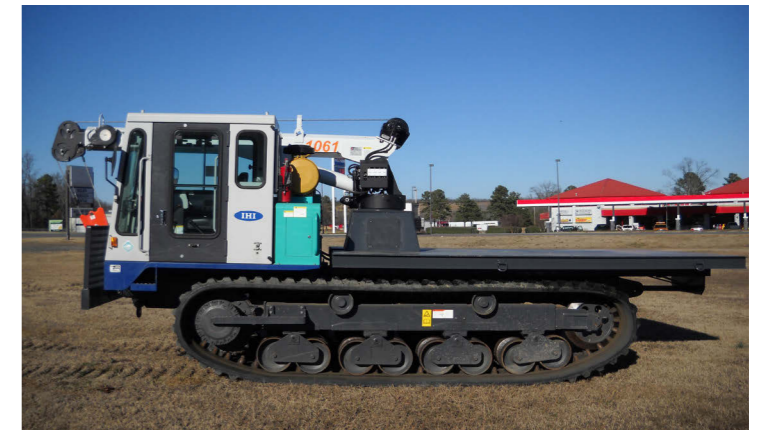
6.8 MPH (UNLOADED) / 5.0 MPH (LOADED)

HST TRANSMISSION SYSTEM W/ HST BRAKE +

PARKING BRAKE

19" GROUND CLEARANCE / 29.5" TRACK WIDTH

ENCLOSED SINGLE CAB WITH AC / HEAT



888-925-0858
www.customtruck.com

*Custom Truck One Source reserves the right to change the specification of any unit at any time without prior notice. This brochure is only a statement of general specifications on the date of this publication.

ASK ABOUT THE CUSTOMIZED AND FLEXIBLE LEASING & FINANCING SOLUTIONS AVAILABLE FROM CUSTOM TRUCK CAPITAL

