

LOAD KING



PARTS MANUAL

LOAD KING

SHINGLE CONVEYOR

REV C

AUGUST 8, 2018

TABLE OF CONTENTS

INTRODUCTION.....	3
DEFINITIONS USED IN THIS MANUAL	4
SAFETY WARNINGS	4
LOAD KING SHINGLE CONVEYOR LABELS	5
LOAD KING SHINGLE CONVEYOR LABEL LOCATIONS.....	8
CVR00107 ASSEMBLY, PEDESTAL W/MAST CYLINDER	9
CVR00051 SUB-ASSEMBLY, PEDESTAL ROTATION BASE/LIFT CYLINDER	11
CVR00105 ASSEMBLY, CYLINDER W/EXTENSION VERTICAL LIFT INNER PEDESTAL TOP.....	13
CVR00277 ASSEMBLY, SWIVEL SHAFT UNION ROTATION PEDESTAL	15
CVR00142 ASSEMBLY, OUTRIGGER REAR.....	17
CVR00226 ASSEMBLY, REAR BUMPER.....	19
CONVEYOR 1.....	21
CONVEYOR 2.....	23
CONVEYOR 3.....	25
CONVEYOR 4.....	27
CONVEYOR 5.....	29
CONVEYOR 6.....	31
CONVEYOR 7.....	33
CONVEYOR 8.....	35
REVISION CONTENT.....	37

Company

Load King has been producing quality trailers since 1956. We are located in Elk Point, South Dakota.

Although the trailer industry is an ever-changing environment and we've seen many changes over the years, we have remained committed to the simple philosophy that we will make a reasonable profit through the designing, manufacturing, and marketing of top quality products that we can always be proud to call Load King. We have not, and will not, compromise in this area.

Quality shows in all facets of an operation, from the moment you make your first phone call for a product inquiry to the time you sell your used equipment and realize you've received top dollar on your sale. We continue to strive for excellence in every area and never quit trying to improve. We have earned our reputation believing that quality is value and value sells products.

Through our shared Engineering, Marketing and Sales teams, Load King and Custom Truck One Source bring that tradition of quality and value to another market with the Load King Shingle Conveyor.


About Custom Truck One Source

Beginning in February of 2015, three family-owned and operated companies (Custom Truck & Equipment, Utility Fleet Sales and Forestry Equipment of VA) joined together to form what is now Custom Truck One Source. Shortly after its inception, UCO Equipment became a part of the CTOS family along with TNT Equipment six months later. In December 2015, CTOS welcomed its sixth company under its brand, Load King, a leading manufacturer of high-quality and customizable trailers.

The announcement of the partnership represented the platform's collective commitment to the continued growth and dominance of each legacy company's individual offerings, now compounded to leverage the expertise of the team and, ultimately, better serve loyal CTOS customers all over the world. CTOS will build upon the market positions of each legacy company, while serving as a single source supplier of specialty equipment and services for the utility and heavy equipment industries. The utility and heavy equipment platform collectively offers sales, rentals, parts and after market services, remanufacturing, customized equipment and transportation.


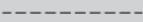


Definitions Used in this Manual

The following table describes text and symbols used to highlight important information.

Signal Word	Symbol	Explanation
WARNING		WARNING IS USED TO ALERT READERS ABOUT THE POTENTIAL FOR SERIOUS INJURY OR DEATH OR SERIOUS DAMAGE TO EQUIPMENT.

Table—1

The following table describes line types in the parts drawings.

LINE FONTS		DESCRIPTION
	SOLID LINE FONT	INDICATES PART OUTLINES IN THE DRAWINGS.
	DASHED LINE FONT	INDICATES HOW TWO OR MORE PARTS ASSEMBLE.
	KEYED BOX/BRACKET	INDICATES PARTS INSIDE OF A SUB ASSEMBLY.
	DASHED KEY	INDICATES PART NOT VISIBLE OR HIDDEN IN VIEW

Table—2

SAFETY WARNINGS



WARNING: All repairs, adjustments and maintenance not described in the Operator's Manual must be performed by Qualified Service Personnel.



WARNING: Hydraulic system components can contain high pressures of which, if suddenly or unexpectedly released, can cause serious injury or death by direct contact with the pressurized oil or by contact with moving machine components.

LOAD KING SHINGLE CONVEYOR LABELS

		
1	2	3
		
4	5	6
		
7	8	9
		
10	11	12
		
13		14

LOAD KING SHINGLE CONVEYOR LABELS



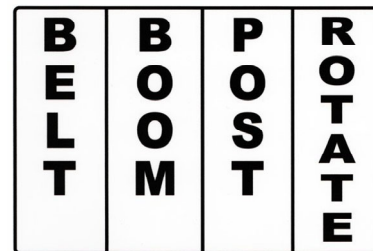
! DANGER

CONVEYOR IMPACT HAZARD

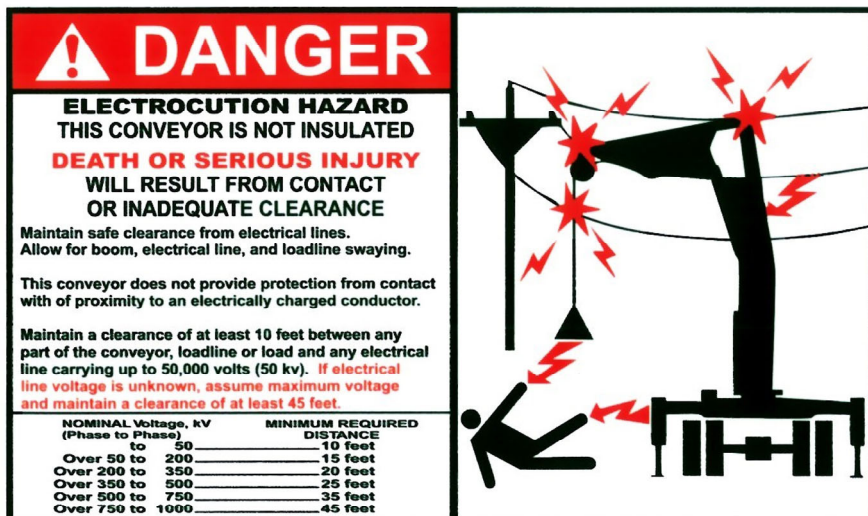
Risk of **SERIOUS INJURY** or **DEATH** due to hydraulic system failure. Conveyor may suddenly fail. Do not tamper with any hydraulic components. Unauthorized modification of the hydraulic system is illegal and highly dangerous.

If you are **UNCLEAR** or do not **UNDERSTAND** ANY PART of this **WARNING**, contact the manufacturer.

15



16



! DANGER

ELECTROCUTION HAZARD
THIS CONVEYOR IS NOT INSULATED
DEATH OR SERIOUS INJURY
WILL RESULT FROM CONTACT
OR INADEQUATE CLEARANCE

Maintain safe clearance from electrical lines.
Allow for boom, electrical line, and loadline swaying.

This conveyor does not provide protection from contact with or proximity to an electrically charged conductor.

Maintain a clearance of at least 10 feet between any part of the conveyor, loadline or load and any electrical line carrying up to 50,000 volts (50 kv). If electrical line voltage is unknown, assume maximum voltage and maintain a clearance of at least 45 feet.

NOMINAL Voltage, kV (Phase to Phase)	MINIMUM REQUIRED DISTANCE
to 50	10 feet
Over 50 to 200	15 feet
Over 200 to 350	20 feet
Over 350 to 500	25 feet
Over 500 to 750	35 feet
Over 750 to 1000	45 feet

17



18



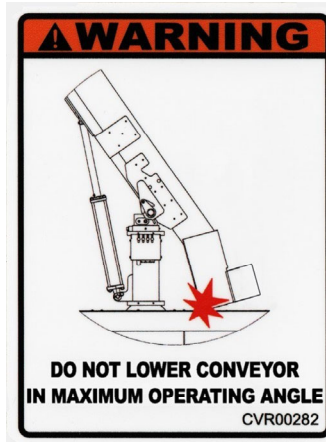
! DANGER

Open belt or chain. Moving parts can crush and cut. Keep hands clear while operating. Risk of falling or entanglement of limbs or body parts in belt or chain. It is unlawful to stand, lie, kneel, walk, crawl or ride on conveyor.

ASME 820-2000
Personnel should be alerted to the potential hazard of entanglement in conveyors caused by items such as long hair, loose clothing or jewelry.

If you are **UNCLEAR** or do not **UNDERSTAND** ANY PART of this **WARNING** - Contact the Manufacturer.

19

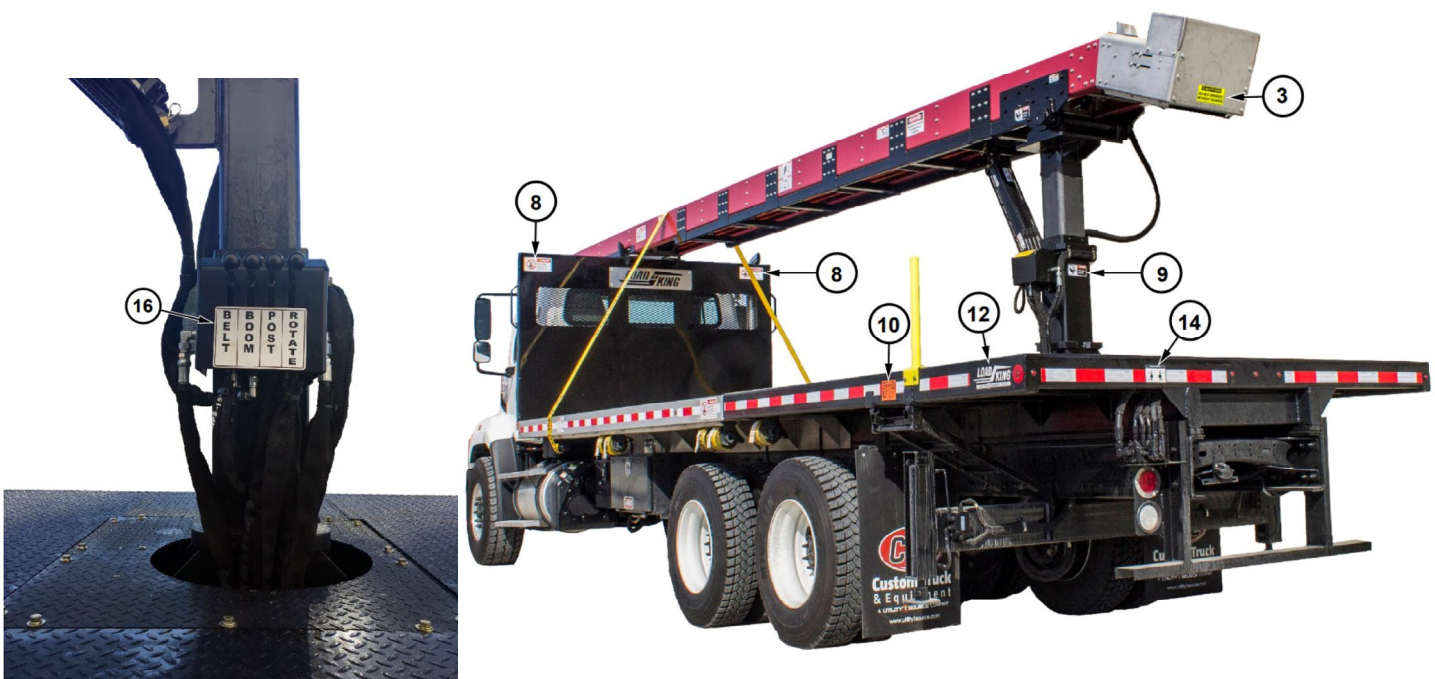
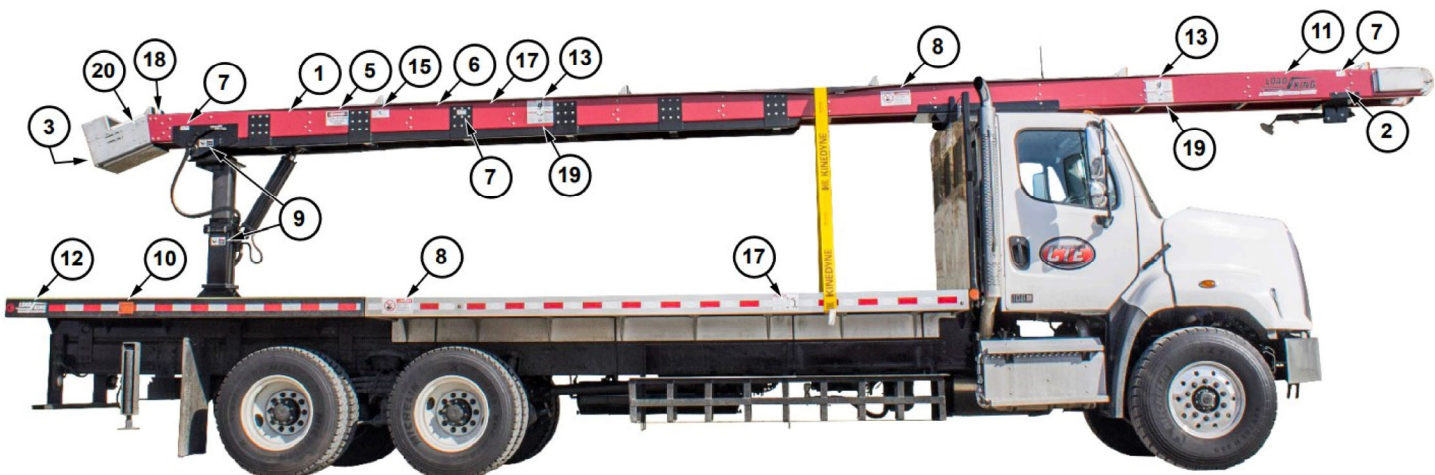
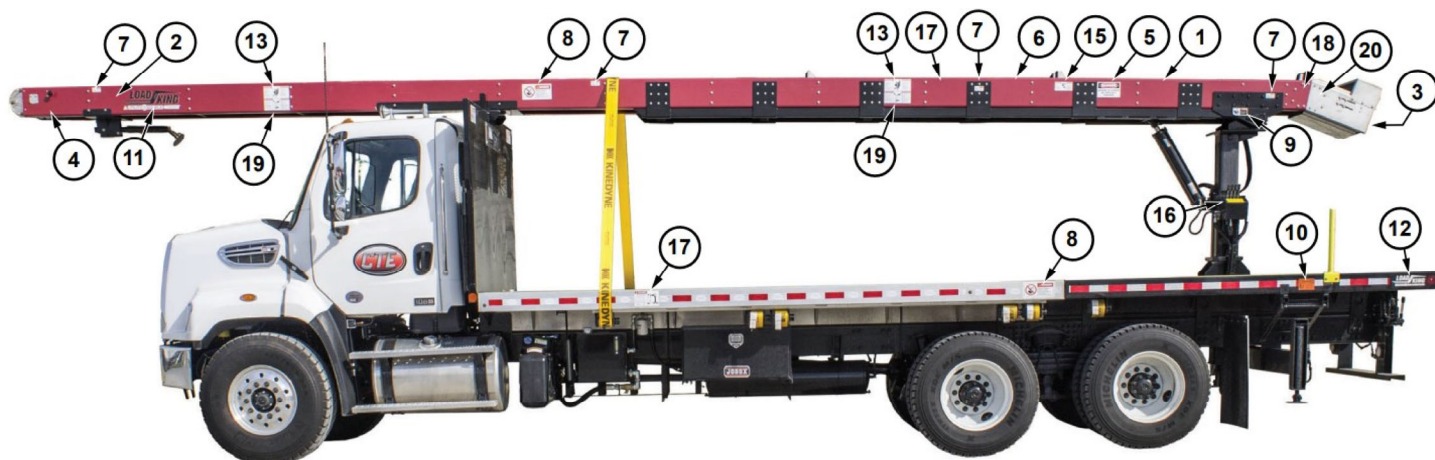


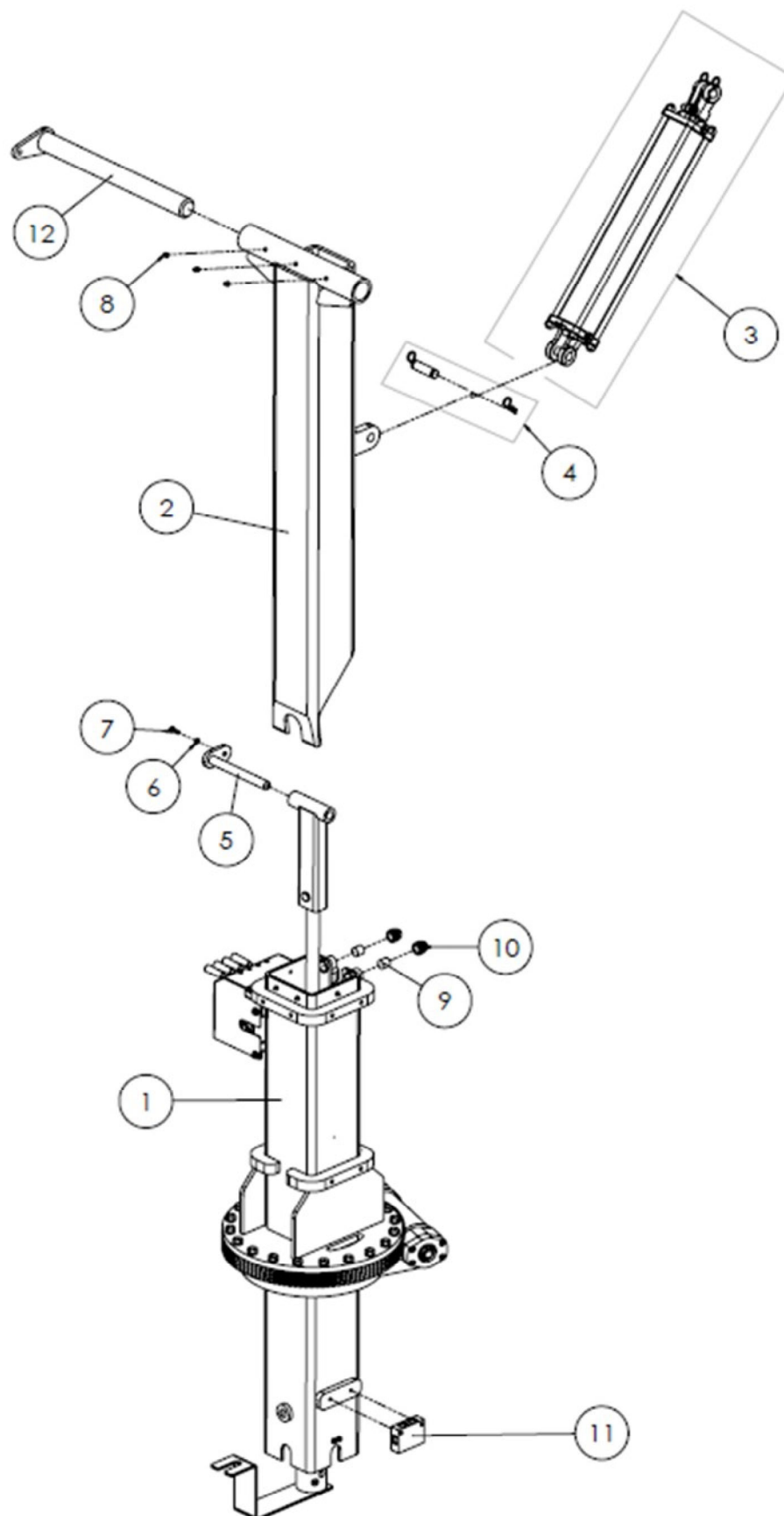
20

LOAD KING SHINGLE CONVEYOR LABELS

KEY	PART NUMBER	DESCRIPTION	QTY.
1	CVR00700	CAUTION - LOOK OUT FOR CONTACT HAZARDS AND MOVING PARTS OF MACHINERY	2
2	CVR00701	CAUTION - LOW OVERHEAD CLEARANCE	2
3	CVR00702	CAUTION - DO NOT OPERATE WITHOUT GUARDS	1
4	CVR00703	BELT - EMERGENCY STOP	1
5	CVR00704	DANGER - CROSSING OR STANDING ON CONVEYOR IS FORBIDDEN	2
6	CVR00705	SAFETY FIRST	2
7	CVR00706	WARNING - KEEP OFF	8
8	CVR00707	DANGER - KEEP CLEAR	6
9	CVR00708	DANGER - MOVING PARTS	4
10	CVR00709	WARNING - OUTRIGGER STAND CLEAR	2
11	CVR00710	LOAD KING - BLACK	2
12	CVR00711	LOAD KING - WHITE	2
13	CVR00712	DANGER - IMPACT HAZARD	4
14	CVR00713	STABILIZERS	1
15	CVR00714	DANGER - CONVEYOR IMPACT HAZARD	2
16	CVR00715	CONTROLS - BELT, BOOM, POST, ROTATE	1
17	CVR00716	DANGER - ELECTROCUTION HAZARD	2
18	CVR00717	WARNING - KEEP HANDS AND FEET AWAY	1
19	CVR00718	DANGER - OPEN BELT	4
20	CVR00719	WARNING - DO NOT LOWER CONVEYOR	1

LOAD KING SHINGLE CONVEYOR LABEL LOCATIONS



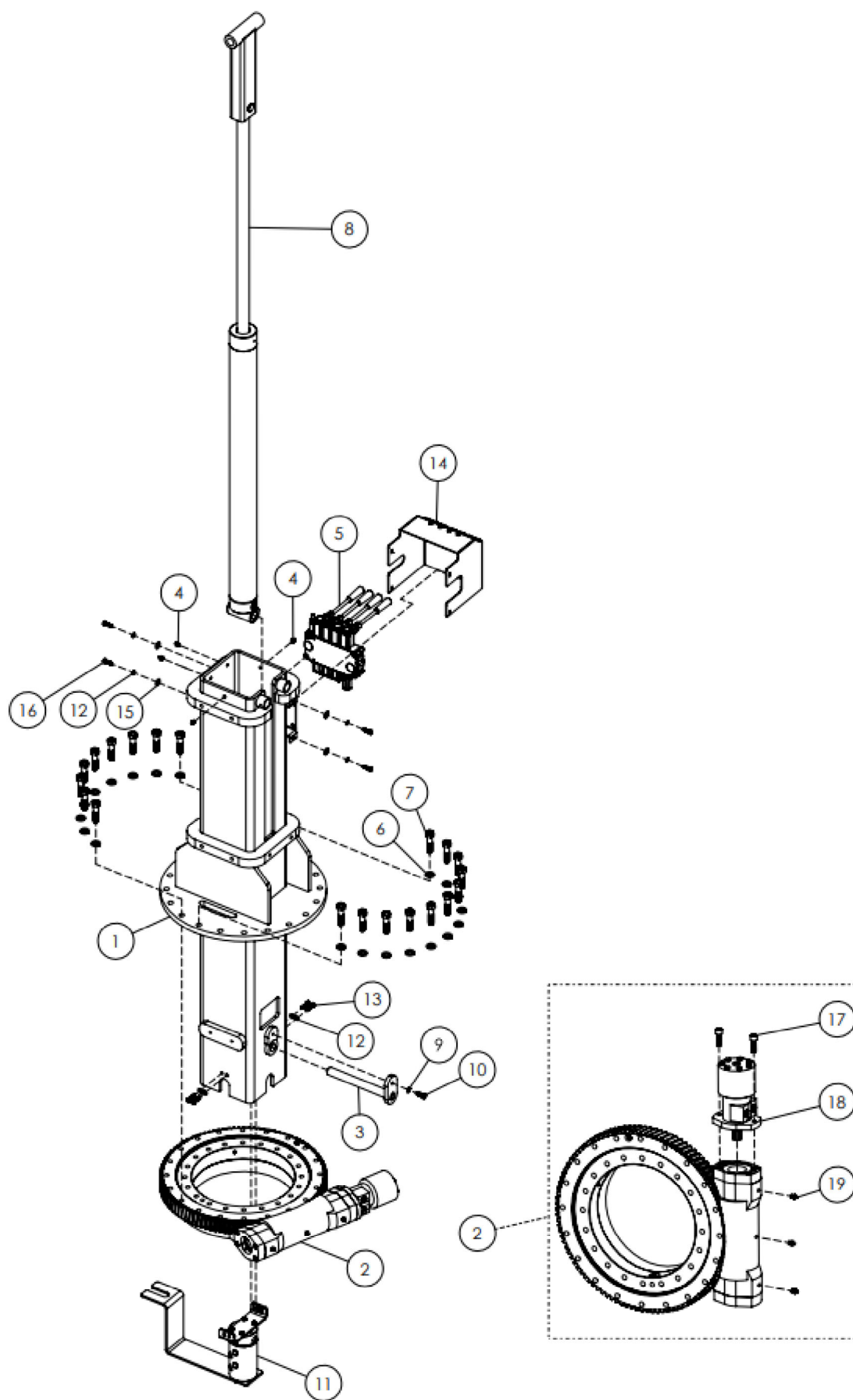
CVR00107 ASSEMBLY, PEDESTAL W/MAST CYLINDER

CVR00107 ASSEMBLY, PEDESTAL W/MAST CYLINDER

KEY	PART NUMBER	DESCRIPTION	QTY.
1	CVR00051*	SUB-ASSY, PEDESTAL ROTATION BASE\LIFT CYLINDER	1
2	CVR00012	WELDMENT, PEDESTAL/ TURRET ROTATION TOP	1
3	CVR00053	CYLINDER, MAST 4" BORE X 24" STROKE X 2" ROD	1
4	CVR00053-CP	CYLINDER PINS AND CLIPS	1
5	CVR00020	WELDMENT, PIN VERTICAL LIFT CYLINDER MOUNTING	1
6	1001183	LOCKWASHER, SPLIT 3/8" ZP	1
7	1000261	HHCS, 3/8-16 UNC X 1" LG GR 8 ZP	1
8	1001350	ZERK, GREASE FITTING STRAIGHT STEEL 1/8 NPT	3
9	CVR00147	WEAR PAD, UPPER PEDESTAL SUPPORT	2
10	1002469	PLUG, 1-1/4-7 UNC EXTERNAL SQ HD ZP	2
11	CVR00149 -1	HOLDING VALVE	1
12	CVR00110	WELDMENT, ARM BOOM PIVOT PIN RETAINER	1

*CVR00051 parts breakdown located on page 8.



CVR00051 SUB-ASSEMBLY, PEDESTAL ROTATION BASE/LIFT CYLINDER

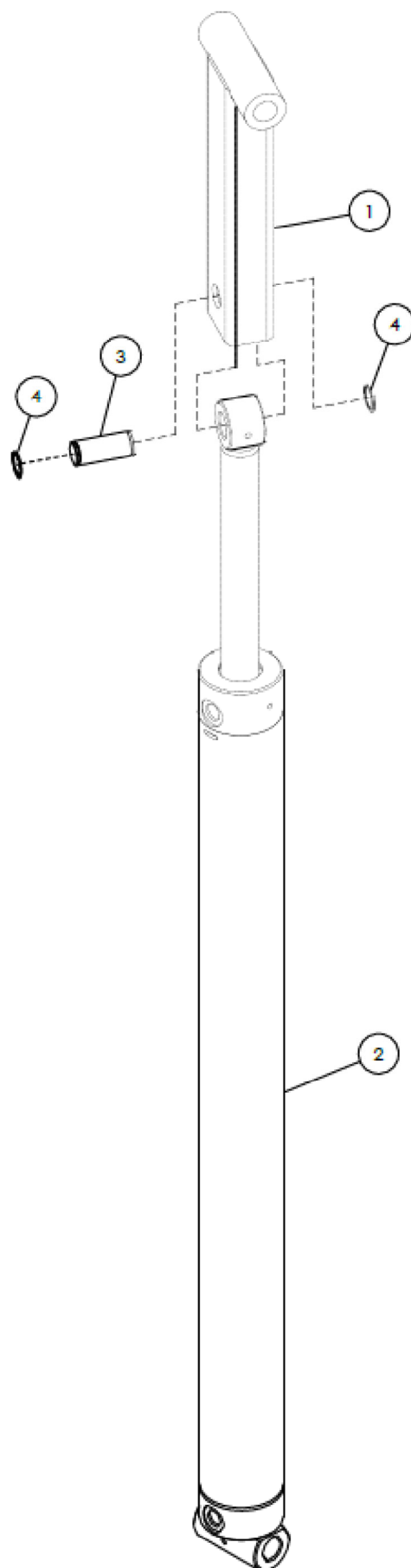
CVR00051 SUB-ASSEMBLY, PEDESTAL ROTATION BASE/LIFT CYLINDER

KEY	PART NUMBER	DESCRIPTION	QTY.
1	CVR00010	WELDMENT, PEDESTAL ROTATION BASE	1
2	CVR00022	SLEWING DRIVE	1
3	CVR00020	WELDMENT, PIN VERTICAL LIFT CYLINDER MOUNTING	1
4	CVR00802	ZERK, GREASE FITTING STRAIGHT STEEL 1/8 NPT	4
5	CVR00057	VALVE, HYDRAULIC CONTROL PEDESTAL 4-WAY	1
6	CVR00804	LOCKWASHER, SPLIT 5/8" ZP	20
7	CVR00805	HHCS, 5/8-11 UNC X 2-1/2" LG GR 8 ZP	20
8	CVR00105*	ASSY, CYLINDER W/EXTENSION VERTIACL LIFT INNER PEDESTAL TOP	1
9	CVR00800	LOCKWASHER, SPLIT 3/8" ZP	1
10	CVR00801	HHCS, 3/8-16 UNC X 1" LG GR 8 ZP	1
11	CVR00277*	ASSY, SWIVEL SHAFT UNION ROTATION PEDESTAL	1
12	CVR00807	LOCKWASHER, SPLIT 5/16" ZP	8
13	CVR00808	HHCS, 5/16-18 UNC X 1-1/4" LG GR 8	4
14	CVR00278	PLATE, COVER HYDRAULIC CONTROL VALVE	1
15	CVR00811	FLATWASHER, 5/16" ZP	4
16	CVR00809	HHCS, 5/16-18 UNC X 1" LG GR 5 ZP	4
17	CVR00304	SLEWING DRIVE, MOTOR HARDWARE ALLEN HEAD BOLTS	2
18	CVR00303	SLEWING DRIVE, MOTOR	1
19	1001350	ZERK GREASE FITTING STRAIGHT STEEL 1/8"	3

*CVR00105 parts breakdown located on page 10.

*CVR00227 parts breakdown located on page 12.

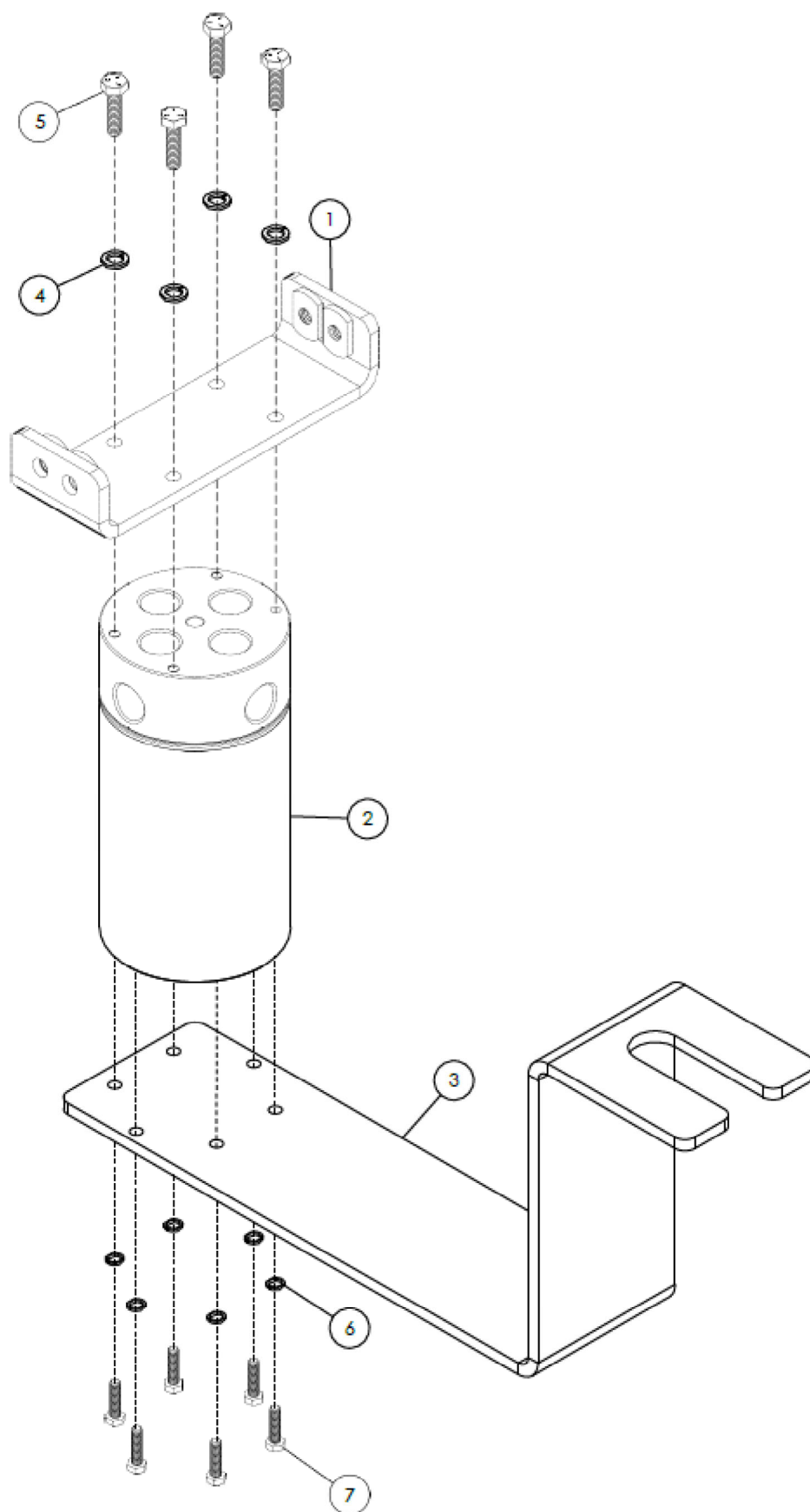


CVR00105 ASSEMBLY, CYLINDER W/EXTENSION VERTICAL LIFT INNER PEDESTAL TOP

CVR00105 ASSEMBLY, CYLINDER W/EXTENSION VERTICAL LIFT INNER PEDESTAL TOP

KEY	PART NUMBER	DESCRIPTION	QTY.
1	CVR00104	WELDMENT, EXTENSION VERTICAL LIFT CYLINDER INNER TOP	1
2	CVR00023	CYLINDER, VERTICAL LIFT 3" BORE X 1.5 ROD X 36" STROKE	1
3	CVR00112	PIN, PIVOT MOUNTING LIFT CYLINDER EXTENSION/ OUTRIGGER	1
4	CVR00810	RETAINING RING, 1" EXTERNAL ZP MC #98410A133 OR EQUIVALENT	2

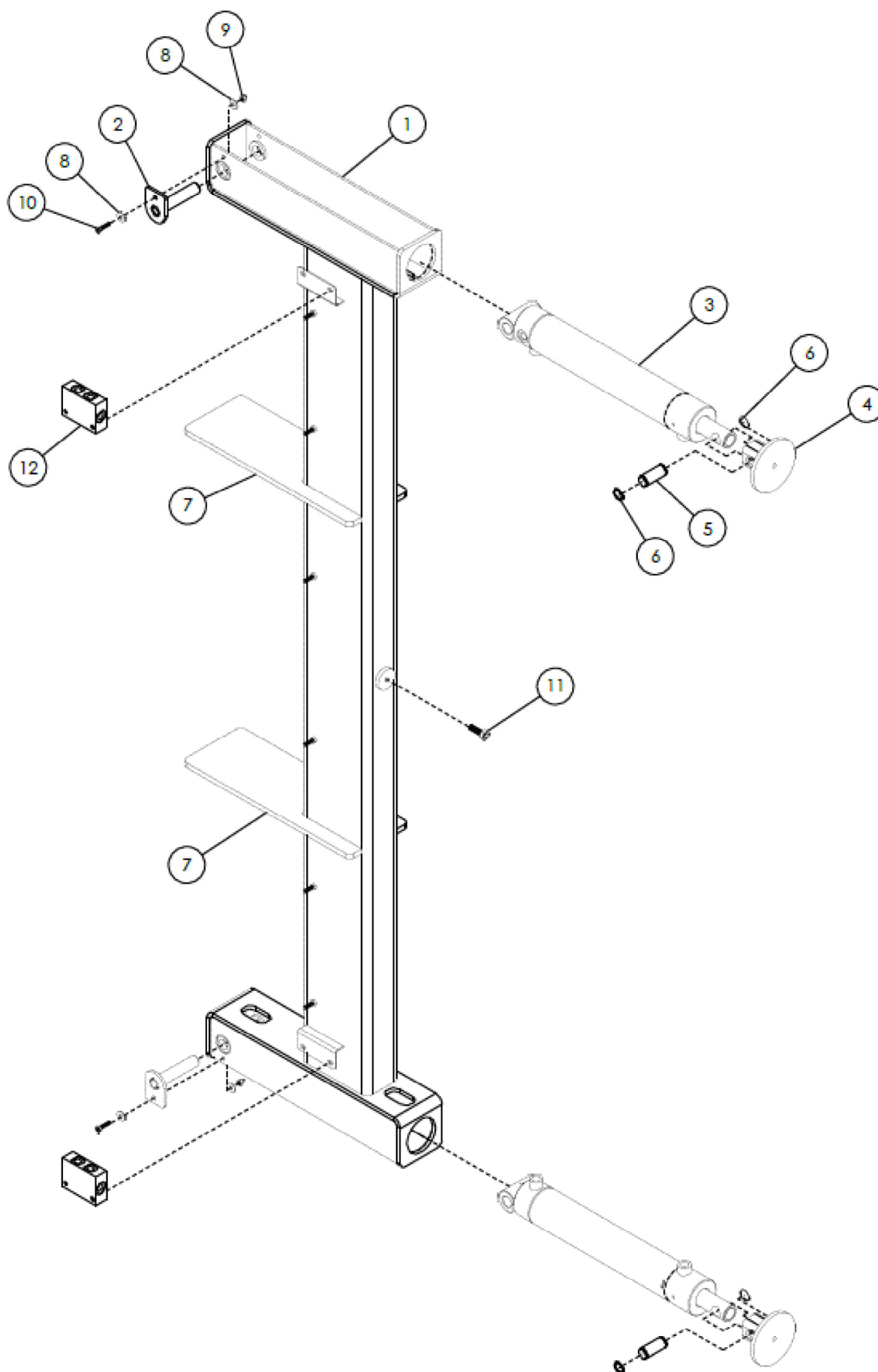


CVR00277 ASSEMBLY, SWIVEL SHAFT UNION ROTATION PEDESTAL

CVR00277 ASSEMBLY, SWIVEL SHAFT UNION ROTATION PEDESTAL

KEY	PART NUMBER	DESCRIPTION	QTY.
1	CVR00276	WELDMENT, BRACKET MOUNTING SWIVEL SHAFT UNION	1
2	CVR00267	SWIVEL, SHAFT UNION 4-PASS 1/2"	1
3	CVR00275	PLATE, BRACKET STATIONARY SWIVEL SHAFT UNION	1
4	1000606	LOCKWASHER, SPLIT 1/4" ZP	4
5	1001272	HHCS, 1/4-20 UNC X 1" LG GR 5 ZP	4
6	1000609	LOCKWASHER, SPLIT #10 ZP	6
7	1002609	HHCS, #10-32 UNF X 3/4" LG GR 8	6



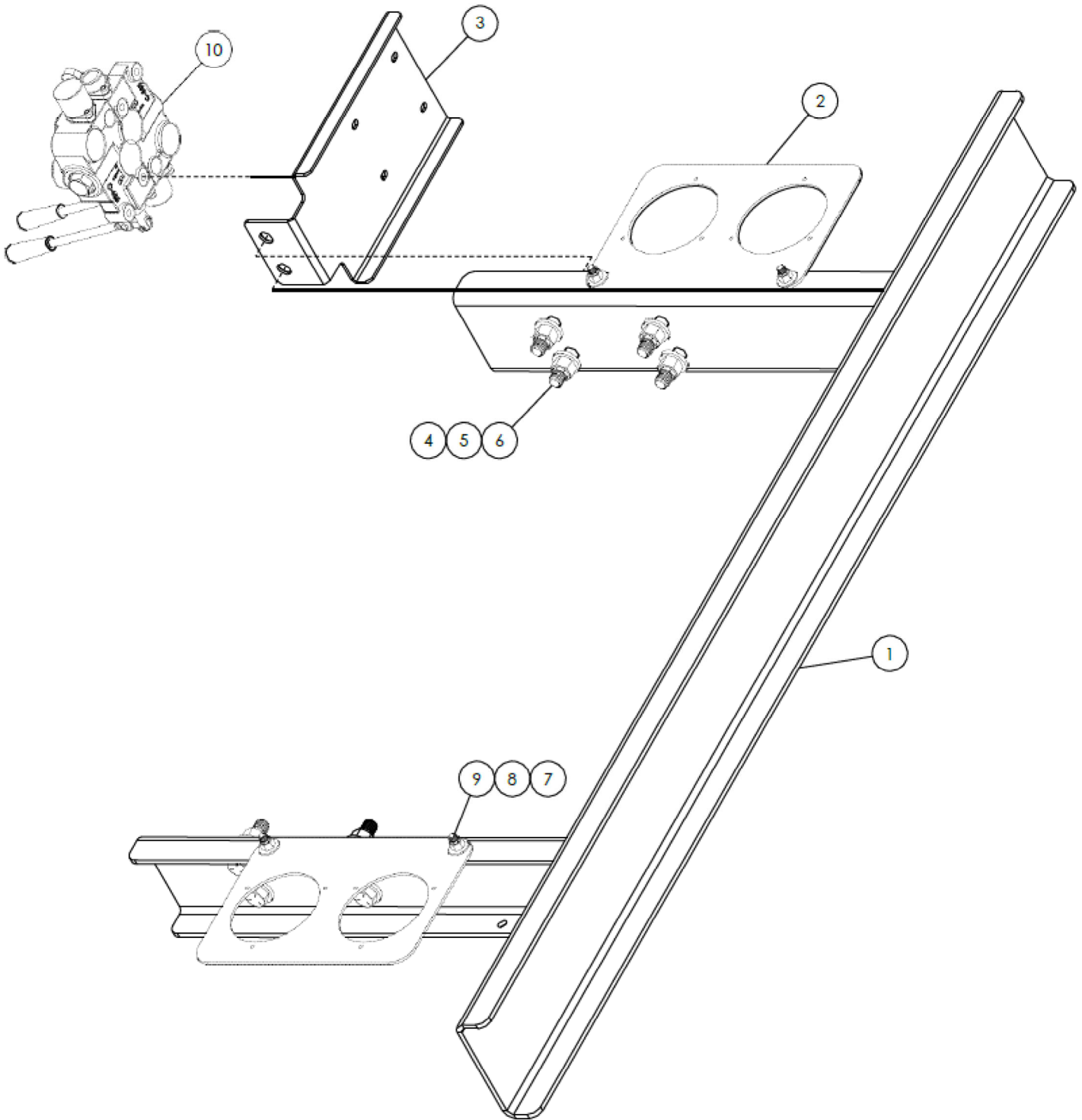
CVR00142 ASSEMBLY, OUTRIGGER REAR

CVR00142 ASSEMBLY, OUTRIGGER REAR

KEY	PART NUMBER	DESCRIPTION	QTY.
1	CVR00122	WELDMENT, FRAME REAR OUTRIGGER	1
2	CVR00124	WELDMENT, PIN CYLINDER MOUNTING	2
3	CVR00141	CYLINDER, OUTRIGGER 3" BORE X 16" STROKE X 1-1/2" ROD	2
4	CVR00123	WELDMENT, FOOT REAR OUTRIGGER	2
5	CVR00112	PIN, PIVOT MOUNTING LIFT CYLINDER EXTENSION/OUTRIGGER	2
6	CVR00810	RETAINING RING, 1" EXTERNAL ZP	4
7	CVR00125	PLATE, MOUNTING REAR OUTRIGGER	2
8	CVR00811	FLATWASHER, 5/16" ZP	4
9	CVR00812	LOCKNUT, TOP 5/16-18 UNC ZP	2
10	CVR00808	HHCS, 5/16-18 UNC X 1-1/4" LG GR 8	2
11	CVR00813	HHCS, 1/2-13 X 1-1/4", GR8 ZP	1
12	CVR00149	HHCS, 1/2-13 X 1-1/4", GR8 ZP	2



CVR00226 ASSEMBLY, REAR BUMPER

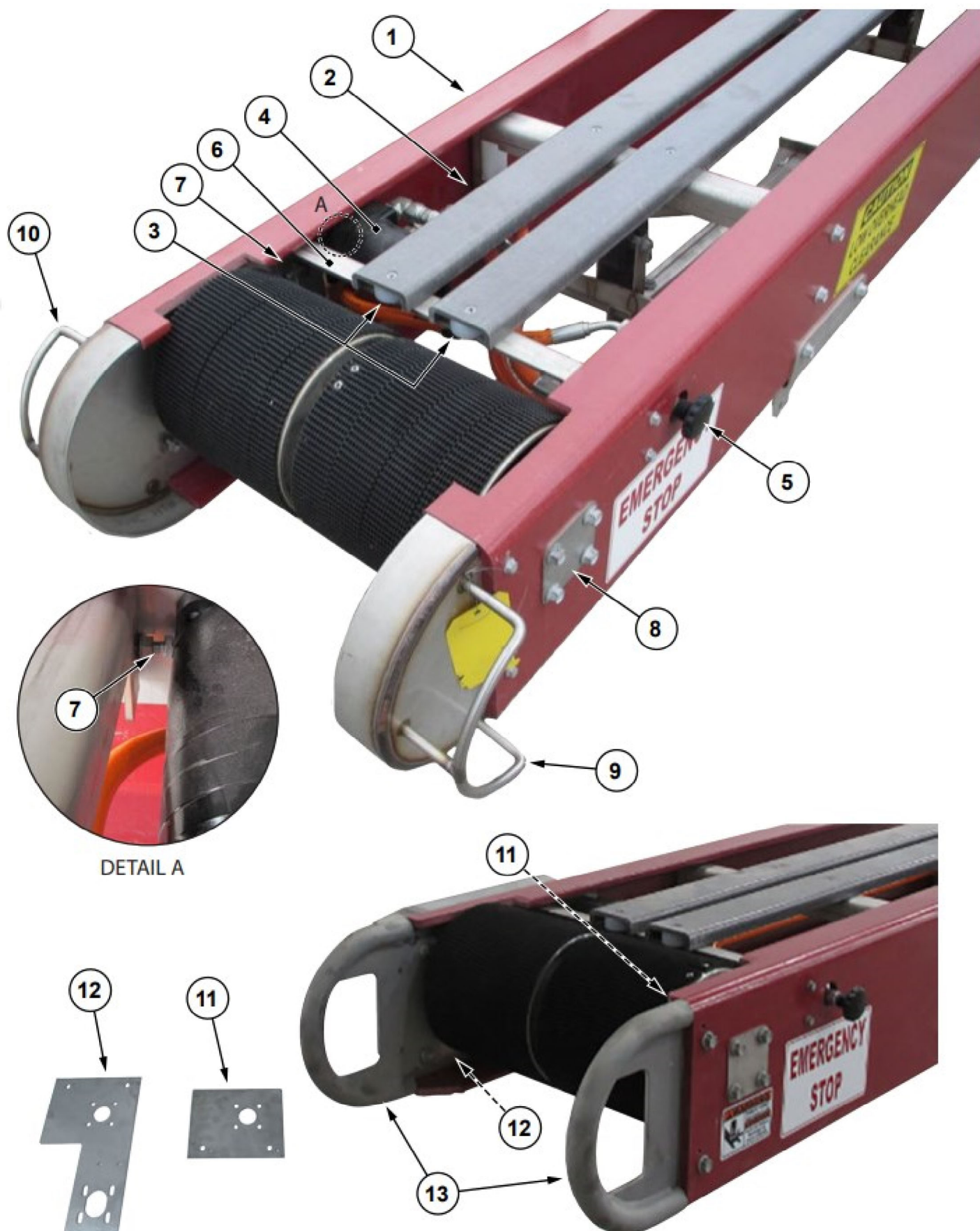


CVR00226 ASSEMBLY, REAR BUMPER

KEY	PART NUMBER	DESCRIPTION	QTY.
1	CVR00220	WELDMENT, REAR BUMPER	1
2	CVR00224	PLATE, BRACKET REAR TAIL LIGHTS	2
3	CVR00321	PLATE, BRACKET OUTRIGGER HYDRAULIC CONTROL MOUNTING	1
4	1000191	FLATWASHER, HARDENED 5/8" A325	16
5	1000192	LOCKNUT, TOP 5/8-18 UNC ZP	8
6	1002519	HHCS, 5/8-11 UNC X 2-1/2" LG GR 8 ZP	8
7	1000188	FLATWASHER, 3/8" ZP	8
8	1000189	LOCKNUT, TOP 3/8-16 UNC ZP	4
9	1000377	HHCS, 3/8-16 UNC X 1-1/4" LG GR 5 ZP	4
10	CVR00056	VALVE, HYDRAULIC CONTROL OUTRIGGER 2-WAY	1



CONVEYOR 1



CONVEYOR 1

KEY	PART NUMBER	DESCRIPTION	QTY.*
1	CVR00504 THRU CVR00508**	10" FIBERGLASS CHANNEL PRE- DRILLED	2
2	CVR00509 THRU CVR00513**	3" FIBERGLASS CHANNEL PRE- DRILLED	2
3	CVR00514	NYLON FIBERGLASS CHANNEL SPACER	2
4	CVR00522	HYDRAULIC MOTOR	1
5	CVR00551	HYDRAULIC HEAD SECTION E-STOP	1
6	CVR00612	E-STOP MOTOR ADJUSTER SUPPORT BRACKET	1
7	CVR00613	HYDRAULIC MOTOR ADJUSTER BOLT	1
8	CVR00528	HEAD PULLEY BRACKET PLATE IDLE SIDE	1
9	CVR00525*-	HEAD PULLEY END PLATE IDLE SIDE	1
10	CVR00526*-	HEAD PULLEY END PLATE DRIVER SIDE	1
11	CVR00670*+	HEAD PULLEY END PLATE IDLE SIDE	1
12	CVR00671*+	HEAD PULLEY END PLATE DRIVER SIDE	1
13	CVR00672*+	HEAD PULLEY END PLATE (DRIVER OR IDLE SIDE)	2

* Quantity for conveyor assembly is dependent upon each model. Please contact a Load King representative for more information.

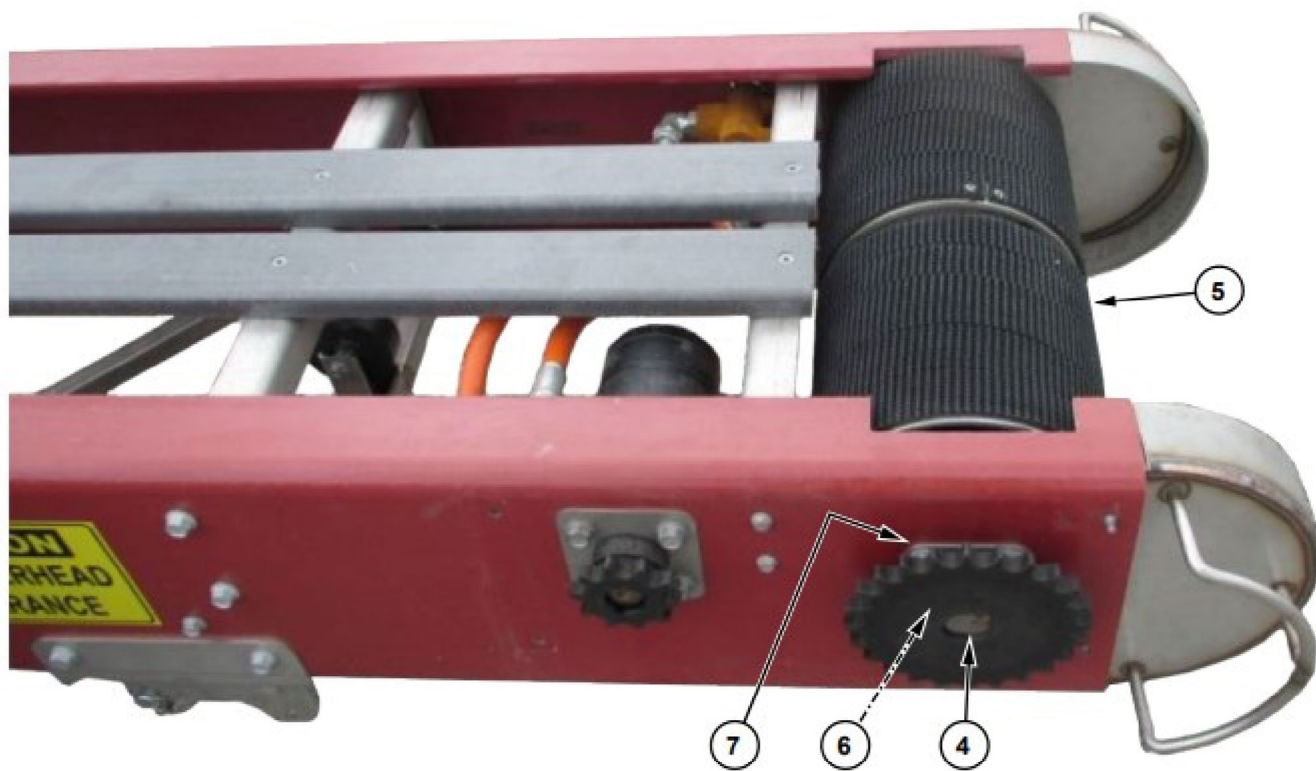
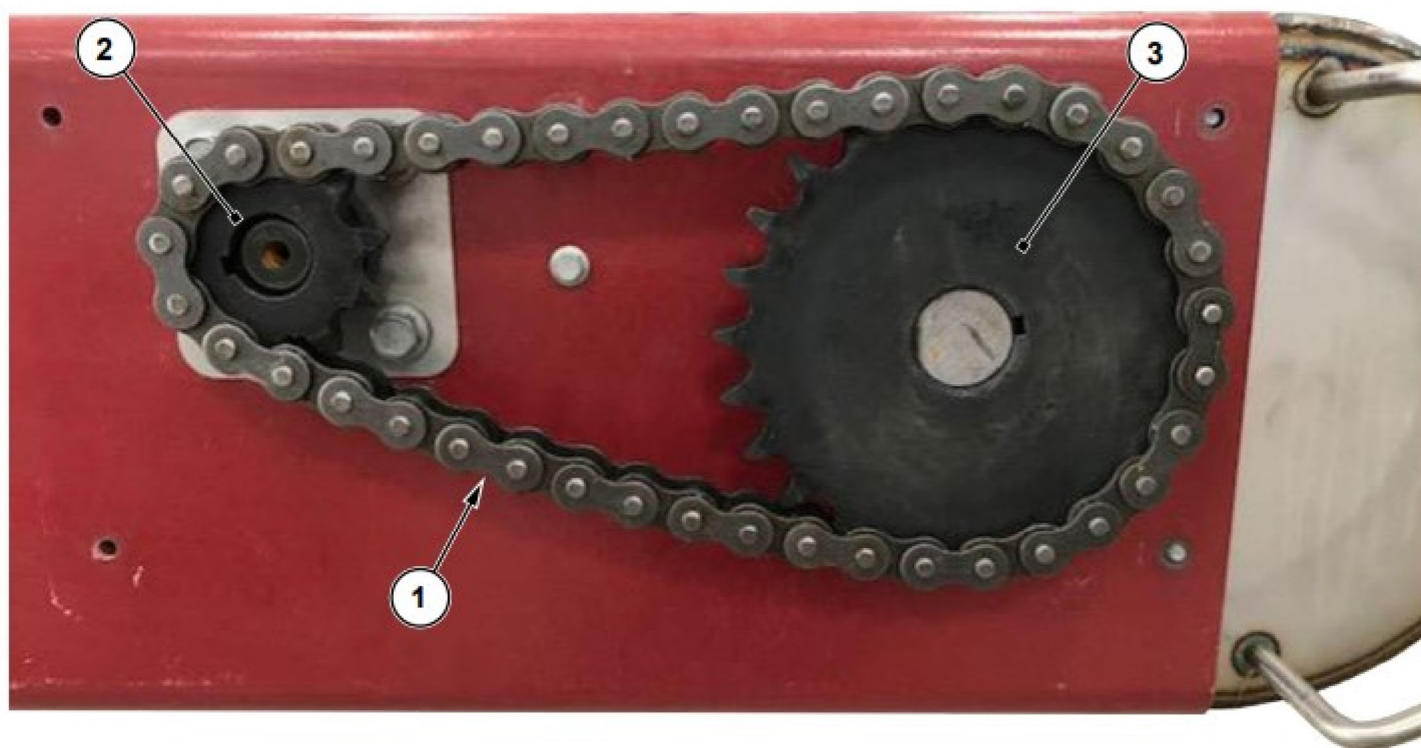
*- For models with S/N LKxx05171030 and earlier

*+ For models with S/N LKxx08171031 and later

** Part number is dependent on boom length. Please contact a Load King representative for more information



CONVEYOR 2



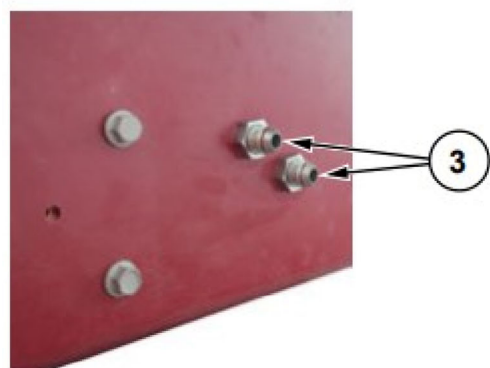
CONVEYOR 2

KEY	PART NUMBER	DESCRIPTION	QTY.*
1	CVR00517	60REG. CHAIN W/CONNECTOR-2.5'	1
2	CVR00518	60BS10HTX1 MOTOR SPROCKET	1
3	CVR00519	60BS24HTX1 1/4 MOTOR SPROCKET	1
4	CVR00663	HEAD PULLEY SHAFT	1
5	CVR00663	HEAD PULLEY DRUM W/BELT LAGGING	2
6	CVR00663	HEAD PULLEY BRACKET	2
7	CVR00527	HEAD PULLEY BRACKET PLATE DRIVE SIDE	1

* Quantity for conveyor assembly is dependent upon each model. Please contact a Load King representative for more information.



CONVEYOR 3



CONVEYOR 3

KEY	PART NUMBER	DESCRIPTION	QTY.*
1	CVR00523*-	SPROCKET & CHAIN GUARD COVER	1
2	CVR00524*+	SPROCKET & CHAIN GUARD COVER	1
3	CVR00523	BULK HEAD FITTING	2
4	CVR00611	FLANGE ROLLER ASSEMBLY W/HARDWARE (RETURN SIDE)	1

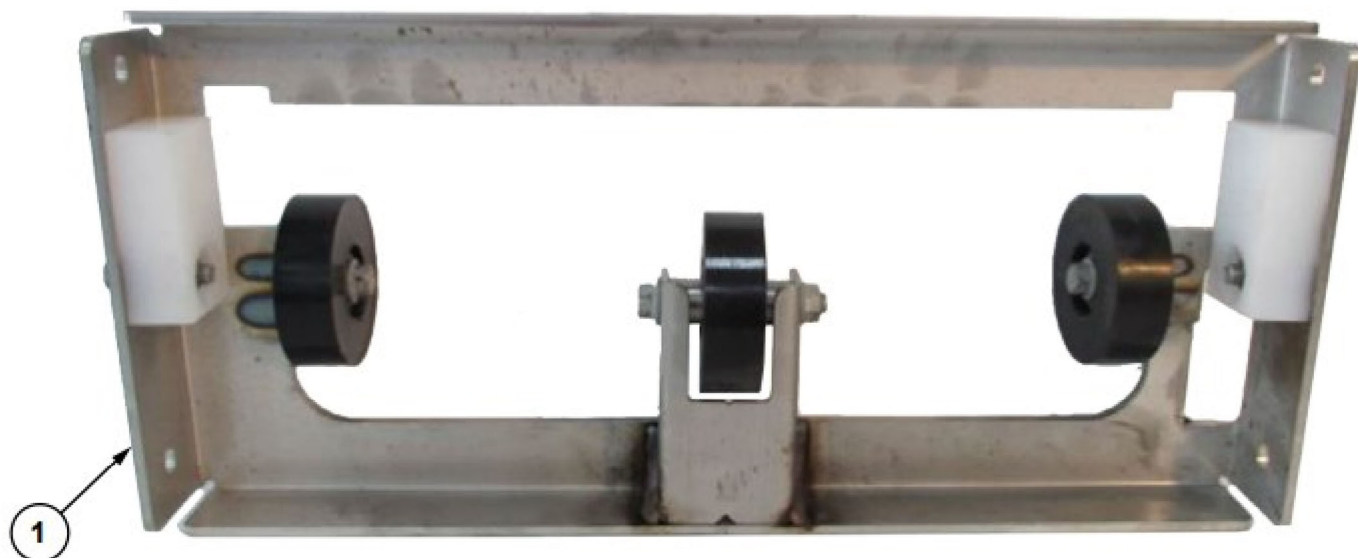
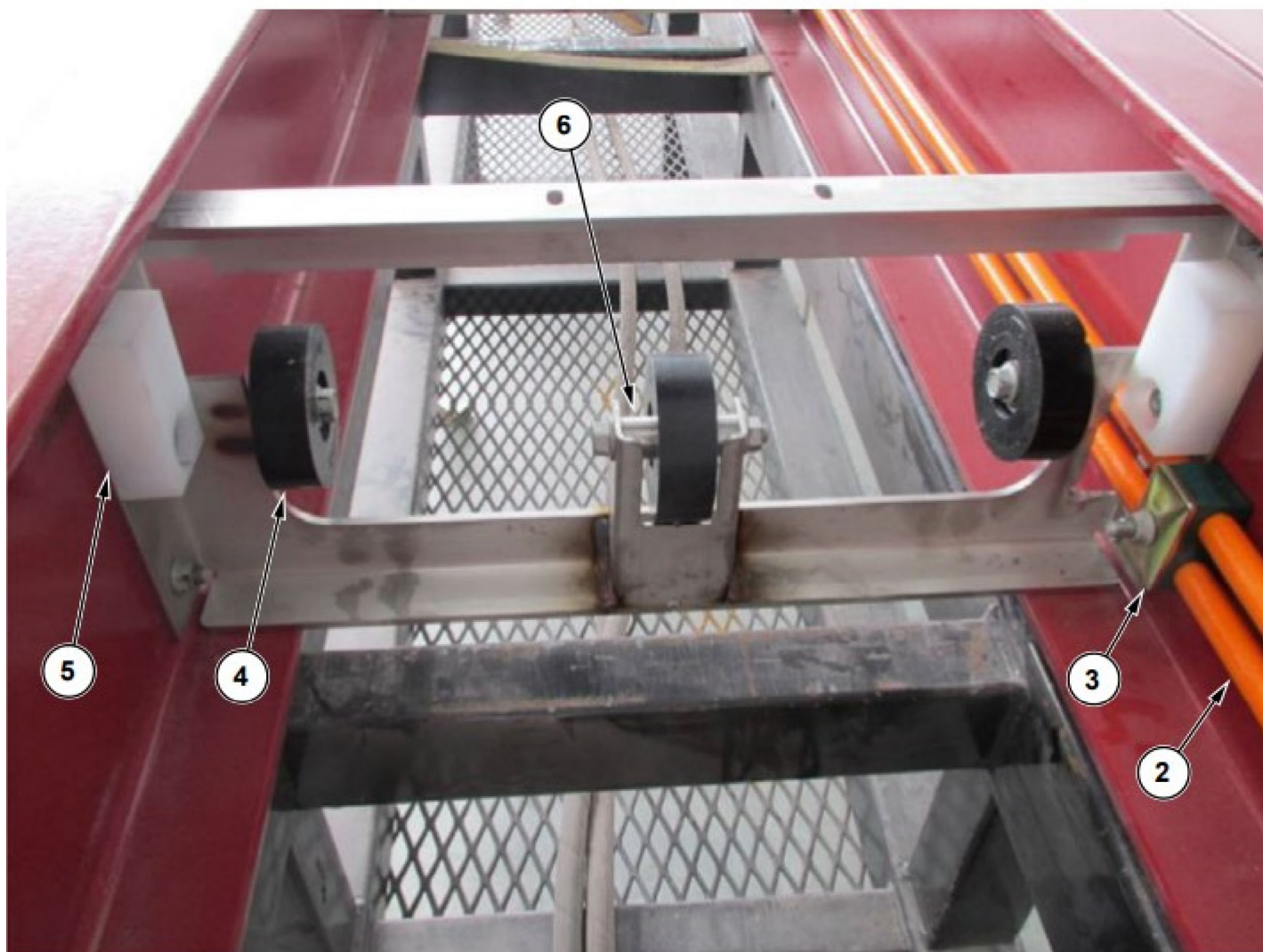
*- For models with S/N LKxx05171030 and earlier

*+ For models with S/N LKxx08171031 and later

* Quantity for conveyor assembly is dependent upon each model. Please contact a Load King representative for more information.



CONVEYOR 4



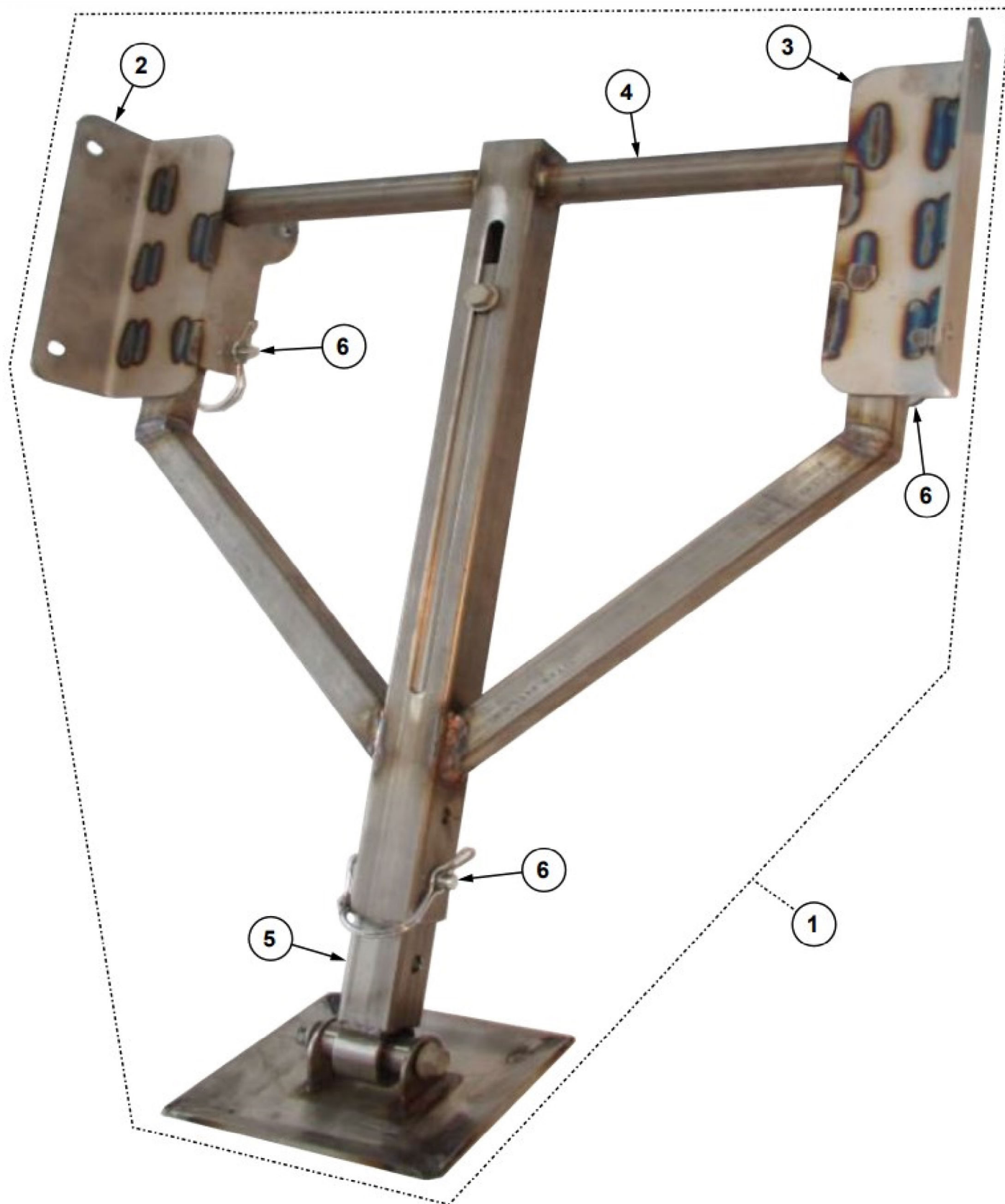
CONVEYOR 4

KEY	PART NUMBER	DESCRIPTION	QTY.*
1	CVR00601	CROSS SUPPORT ASSEMBLY W/ MOUNTING HARDWARE	1
2	CVR00695 THRU CVR00699**	ORANGE HYDRAULIC HOSE- PRESSURE OR RETURN W/ HARDWARE	1
3	CVR00552	HYDRAULIC HOSE CLAMP	1
4	CVR00602	CROSS SUPPORT IDLER WHEEL	3
5	CVR00604	CROSS SUPPORT NYLON GUIDE	2
6	CVR00603	CROSS SUPPORT IDLER WHEEL BUSHING (CENTER WHEEL ONLY)	2

* Quantity for conveyor assembly is dependent upon each model. Please contact a Load King representative for more information.

** Part number is dependent on boom length. Please contact a Load King representative for more information



CONVEYOR 5

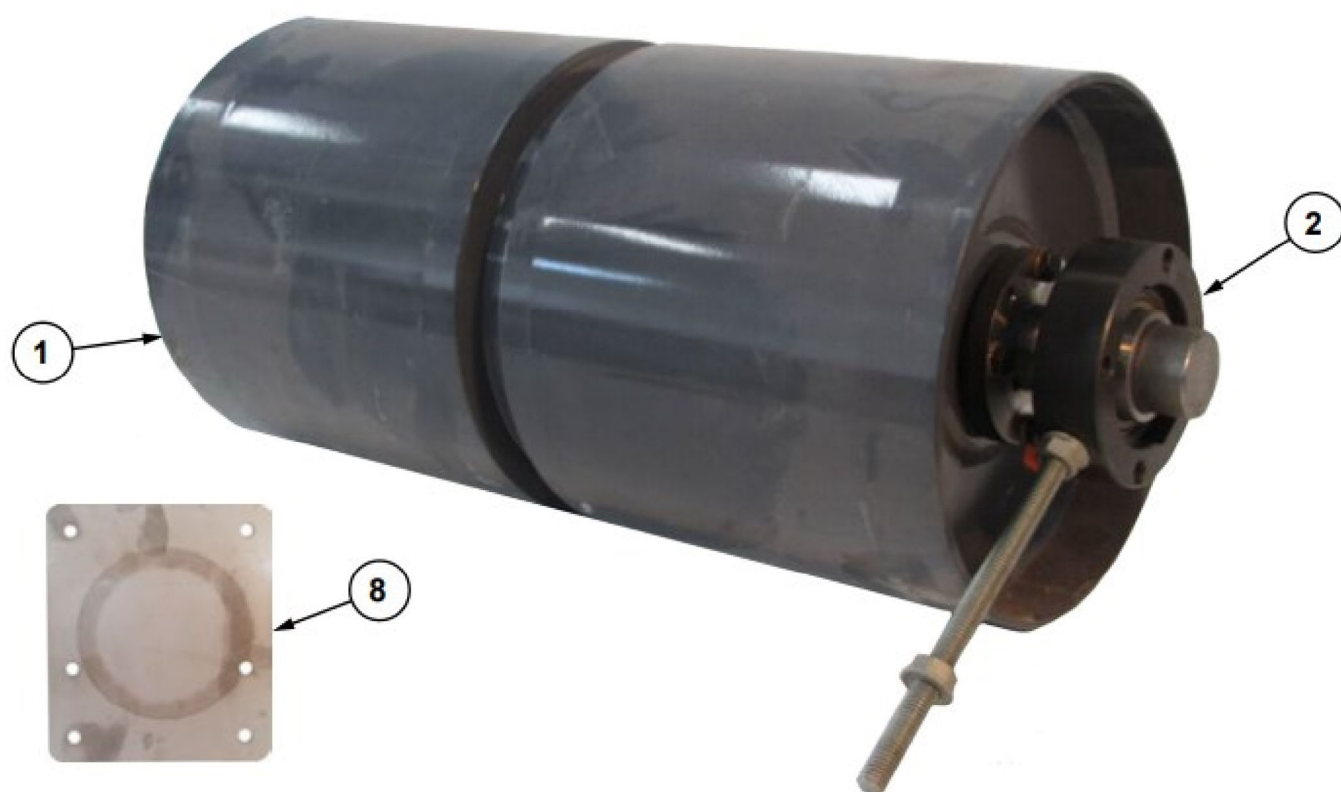
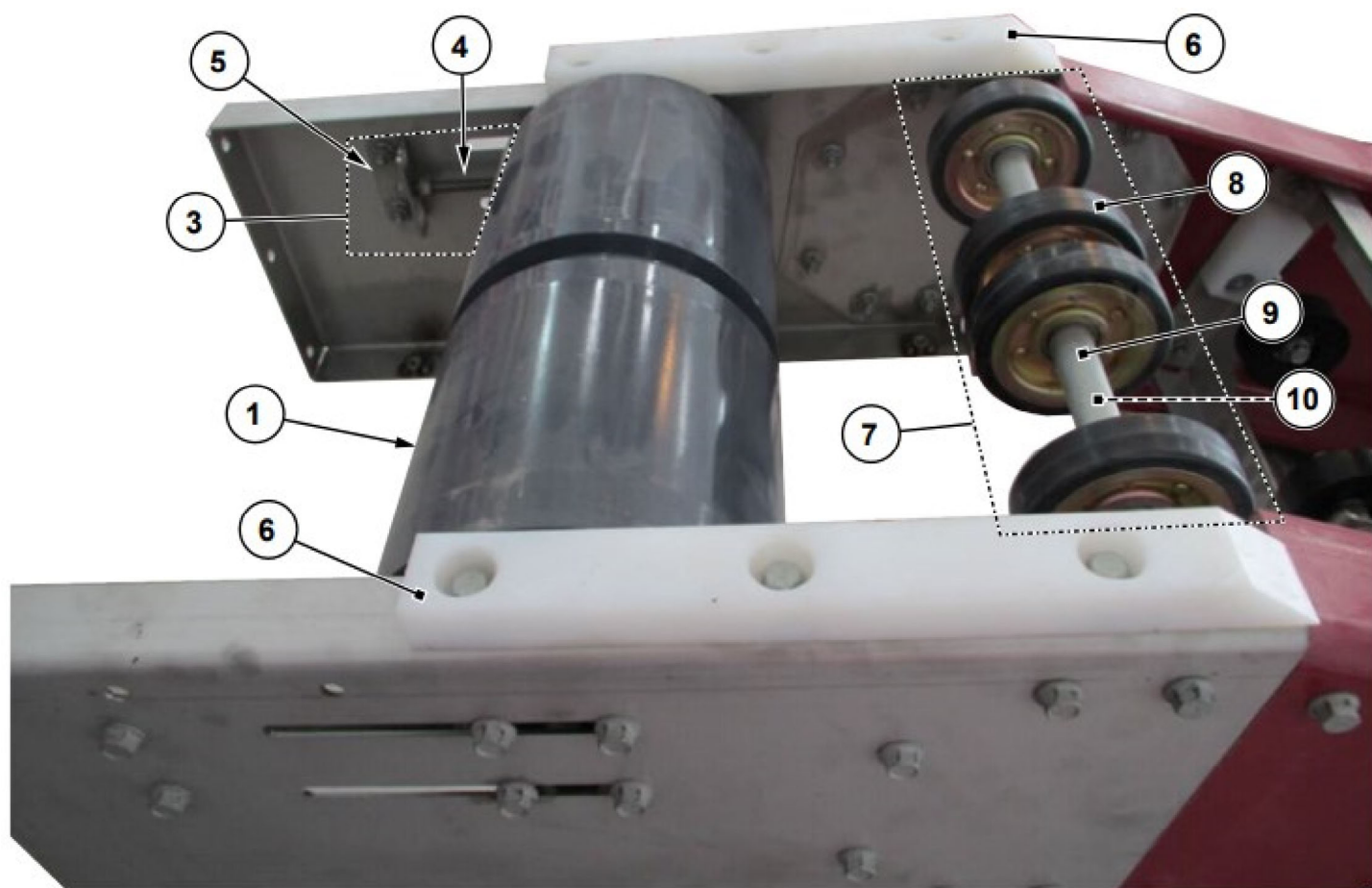
CONVEYOR 5

KEY	PART NUMBER	DESCRIPTION	QTY.*
1	CVR00529	ROOF STAND ASSEMBLY	1
2	CVR00530	ROOF STAND MOUNTING BRACKET DRIVE SIDE	1
3	CVR00531	ROOF STAND MOUNTING BRACKET IDLE SIDE	1
4	CVR00632	ROOF STAND FRAME	1
5	CVR00665	ROOF STAND ADJUSTABLE LE W/ PIVOTING FOOTPAD ASSEMBLY	1
6	CVR00536	ROOF STAND LYNCH PIN	3

* Quantity for conveyor assembly is dependent upon each model. Please contact a Load King representative for more information.



CONVEYOR 6



CONVEYOR 6

KEY	PART NUMBER	DESCRIPTION	QTY.*
1	CVR00664	TAIL PULLEY (COMES WITH TAIL PULLEY SHAFT)	1
2	CVR00662	TAIL & HEAD BEARINGS WITH HOLDER & ADJUSTING HOLE ASSEMBLY	1
3	CVR00540	TAIL PULLEY BEARINGS ADJUSTER AND BRACKET ASSEMBLY	1
4	CVR00541	TAIL PULLEY B7 ADJUSTER ROD FULL THREAD 3/8" X 6"	1
5	CVR00542	TAIL PULLEY ADJUSTER L BRACKET	1
6	CVR00550	TAIL SECTION NYLON SHINGLE GLIDE	2
7	CVR00605	SUPPORT SHAFT ASSEMBLY	1
8	CVR00606	ROLLER SUPPORT SHAFT WHEEL	4
9	CVR00607	ROLLER SUPPORT SHAFT (NOT VISIBLE)	1
10	CVR00608	ROLLER SUPPORT SHAFT SPACER KIT (5 PER KIT) (NOT VISIBLE)	1
11	CVR00609	CRADLE BACKER PLATE 12 GA. 201 STAINLESS STEEL	1

* Quantity for conveyor assembly is dependent upon each model. Please contact a Load King representative for more information.



CONVEYOR 7

CONVEYOR 7

KEY	PART NUMBER	DESCRIPTION	QTY.*
1	CVR00543*+	TAIL SECTION LASER CUT STAINLESS ASSEMBLY	1
2	CVR00666*+	TAIL SECTION SIDE PANELS STAINLESS DRIVE SIDE	1
3	CVR00667*+	TAIL SECTION SIDE PANELS STAINLESS IDLE SIDE (NOT VISIBLE)	1
4	CVR00668*+	TAIL SECTION BOTTOM GUARD STAINLESS (NOT VISIBLE)	1
5	CVR00669*+	TAIL SECTION BACK PANEL GUARD STAINLESS W/ LOGO	1
6	CVR00544*-	TAIL SECTION SIDE PANELS STAINLESS DRIVE SIDE (NOT VISIBLE)	1
7	CVR00545*-	TAIL SECTION SIDE PANELS STAINLESS IDLE SIDE	1
8	CVR00546*-	TAIL SECTION BOTTOM GUARD STAINLESS (NOT VISIBLE)	1
9	CVR00547*-	TAIL SECTION BACK PANEL GUARD STAINLESS W/ LOGO	1
10	CVR00548	TAIL SECTION SPLICE PLATES STAINLESS DRIVE SIDE SET	1
11	CVR00549	TAIL SECTION SPLICE PLATES STAINLESS IDLE SIDE SET	1

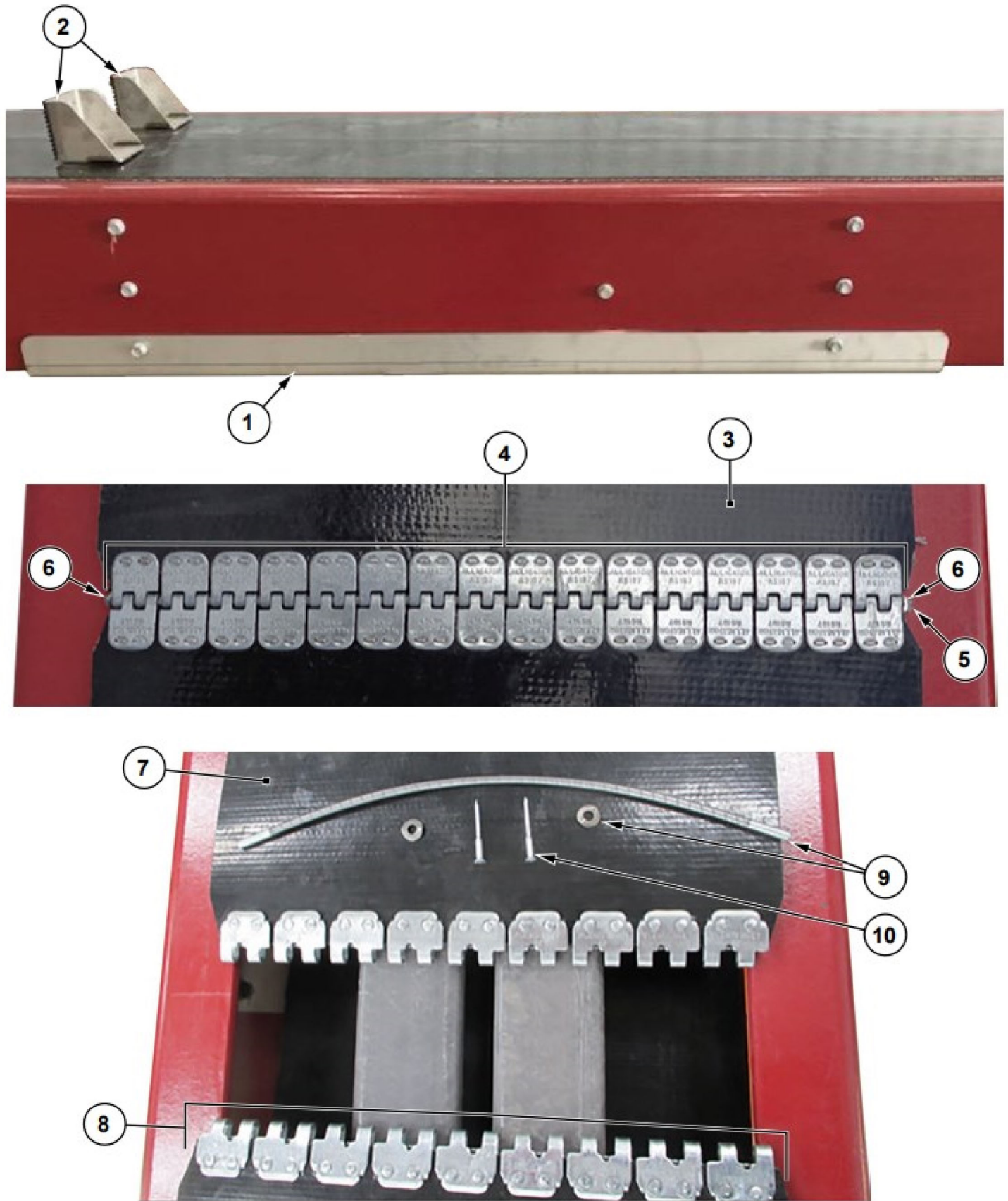
*- For models with S/N LKxx08171050 and earlier

*+ For models with S/N LKxx10171051 and later

* Quantity for conveyor assembly is dependent upon each model. Please contact a Load King representative for more information.



CONVEYOR 8



CONVEYOR 8

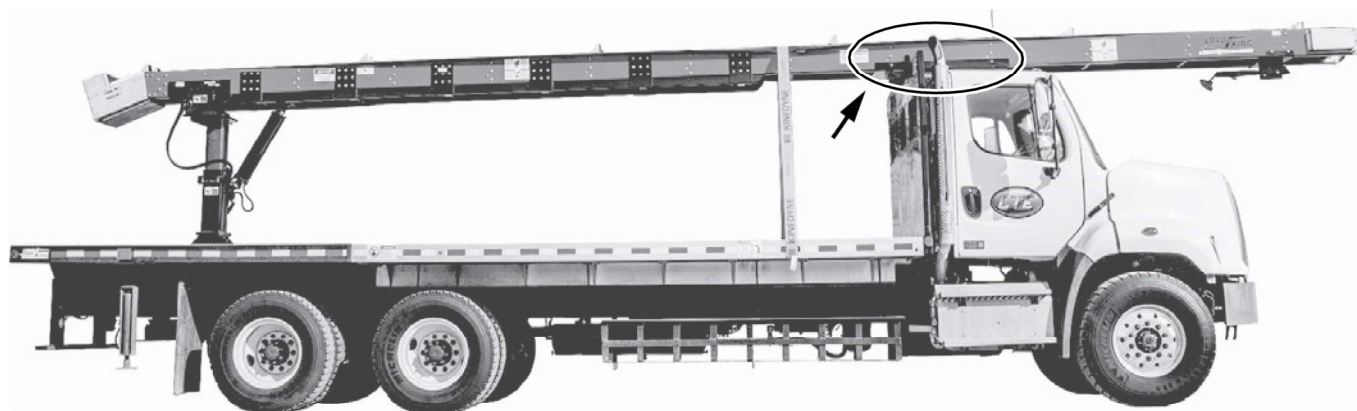
KEY	PART NUMBER	DESCRIPTION	QTY.*
1	CVR00610	CONVEYOR SUPPORT ANGLE STAINLESS STEEL	1
2	CVR00575	PADDLES W/GRIP PAD AND HARDWARE	1
3	CVR00629 THRU CVR00633** *-	BELT AND LACING PVC STYLE COVER BY COVER	1
4	CVR00572*-	ALLIGATOR CLIPS STRIP OF 16	2
5	CVR00573*-	LACING CONNECTING CABLE 16''	1
6	CVR00574*-	RETAINER WASHER	2
7	CVR00559 THRU CVR00563** *+	BELT AND LACING PVC STYLE COVER BY COVER	1
8	CVR00569*+	R2 ALLIGATOR CLIPS STRIP OF 9	2
9	CVR00570*+	R2 LACING CONNECTING CABLE 16'' (AND WASHERS 2EA)	1
10	CVR00571*+	RIVET R2 LACING (PKG OF 18)	1

*- For models with S/N LKxx08171050 and earlier

*+ For models with S/N LKxx10171051 and later

* Quantity for conveyor assembly is dependent upon each model. Please contact a Load King representative for more information.

** Part number is dependent on boom length. Please contact a Load King representative for more information



REVISION CONTENT

REVISION	DATE	DESCRIPTION	LOCATION
A	07/19/17	INITIAL RELEASE	
B	01/08/18	PARTS UPDATE - LKxx05171031 AND LATER	CONVEYOR SECTIONS
		PARTS UPDATE - PREVIOUSLY EXCLUDED	CVR00107 ITEMS 12 & 4
C	08/07/18	PICTURES UPDATE	TRUCK PICTURES



Load King

PO Box 427

Elk Point, South Dakota, USA 57025-0427

Toll Free: (888) 264-5522