



PARTS MANUAL VOYAGER I & II MECHANICS SERVICE TRUCK

For service and maintenance, Contact the Call & Information Center at 833-CT1S-911 (833-281-7911) or email: CIC@CUSTOMTRUCK.COM.

TABLE OF CONTENTS

1.0 INTRODUCTION	3
2.0 DEFINITIONS USED IN THIS MANUAL.....	4
3.0 SAFETY WARNINGS	4
4.0 LOAD KING SERVICE TRUCK DECALS	5
5.0 PARTS.....	12
6.0 HYDRAULIC SCHEMATIC VOYAGER I	47
7.0 HYDRAULIC SCHEMATIC VOYAGER II	48
8.0 ELECTRICAL SCHEMATIC VOYAGER	49
9.0 PNEUMATIC SCHEMATIC.....	50
10.0 APPENDIX	52

1.0 INTRODUCTION

Company

Load King has been producing quality trailers since 1956. We are located in Elk Point, South Dakota.

Although the trailer industry is an ever-changing environment and we've seen many changes over the years, we have remained committed to the simple philosophy that we will make a reasonable profit through the designing, manufacturing, and marketing of top quality products that we can always be proud to call Load King. We have not, and will not, compromise in this area.

Quality shows in all facets of an operation, from the moment you make your first phone call for a product inquiry to the time you sell your used equipment and realize you've received top dollar on your sale. We continue to strive for excellence in every area and never quit trying to improve. We have earned our reputation believing that quality is value and value sells products.

Through our shared Engineering, Marketing and Sales teams, Load King and Custom Truck One Source bring that tradition of quality and value to another market with the Load King Mechanics Service Truck.


About Custom Truck One Source

Beginning in February of 2015, three family-owned and operated companies (Custom Truck & Equipment, Utility Fleet Sales and Forestry Equipment of VA) joined together to form what is now Custom Truck One Source. Shortly after its inception, UCO Equipment became a part of the CTOS family along with TNT Equipment six months later. In December 2015, CTOS welcomed its sixth company under its brand, Load King, a leading manufacturer of high-quality and customizable trailers.

The announcement of the partnership represented the platform's collective commitment to the continued growth and dominance of each legacy company's individual offerings, now compounded to leverage the expertise of the team and, ultimately, better serve loyal CTOS customers all over the world. CTOS will build upon the market positions of each legacy company, while serving as a single source supplier of specialty equipment and services for the utility and heavy equipment industries. The utility and heavy equipment platform collectively offers sales, rentals, parts and after market services, remanufacturing, customized equipment and transportation.

2.0 Definitions Used in this Manual

The following table describes text and symbols used to highlight important information.

Signal Word	Symbol	Explanation
WARNING		WARNING IS USED TO ALERT READERS ABOUT THE POTENTIAL FOR SERIOUS INJURY OR DEATH OR SERIOUS DAMAGE TO EQUIPMENT

3.0 SAFETY WARNINGS



WARNING: All repairs, adjustments and maintenance not described in the Operator's Manual must be performed by Qualified Service Personnel.

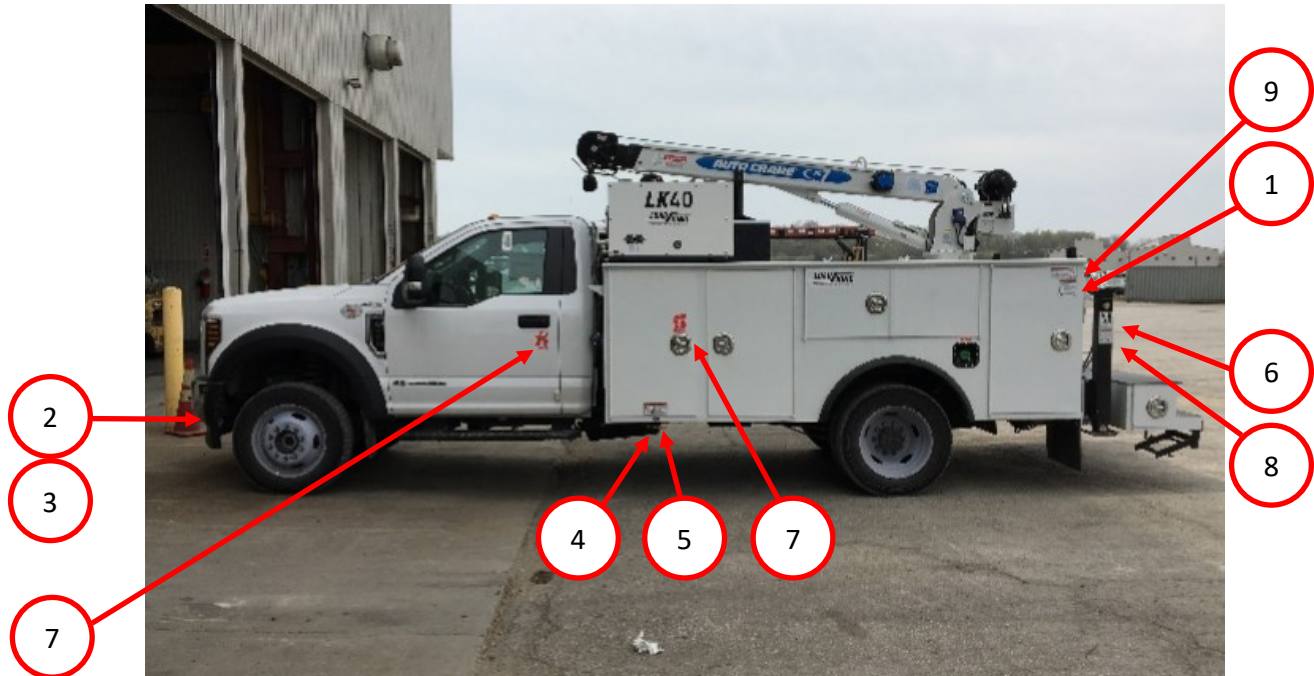


WARNING: Hydraulic system components can contain high pressures of which, if suddenly or unexpectedly released, can cause serious injury or death by direct contact with pressurized oil or by contact with moving machine components.



WARNING: Compressed air system components can contain high pressures of which, if suddenly or unexpectedly released, can cause serious injury or death by direct contact with the pressurized air or by contact with moving machine components. **NEVER** drive vehicle with pressure in air tank.

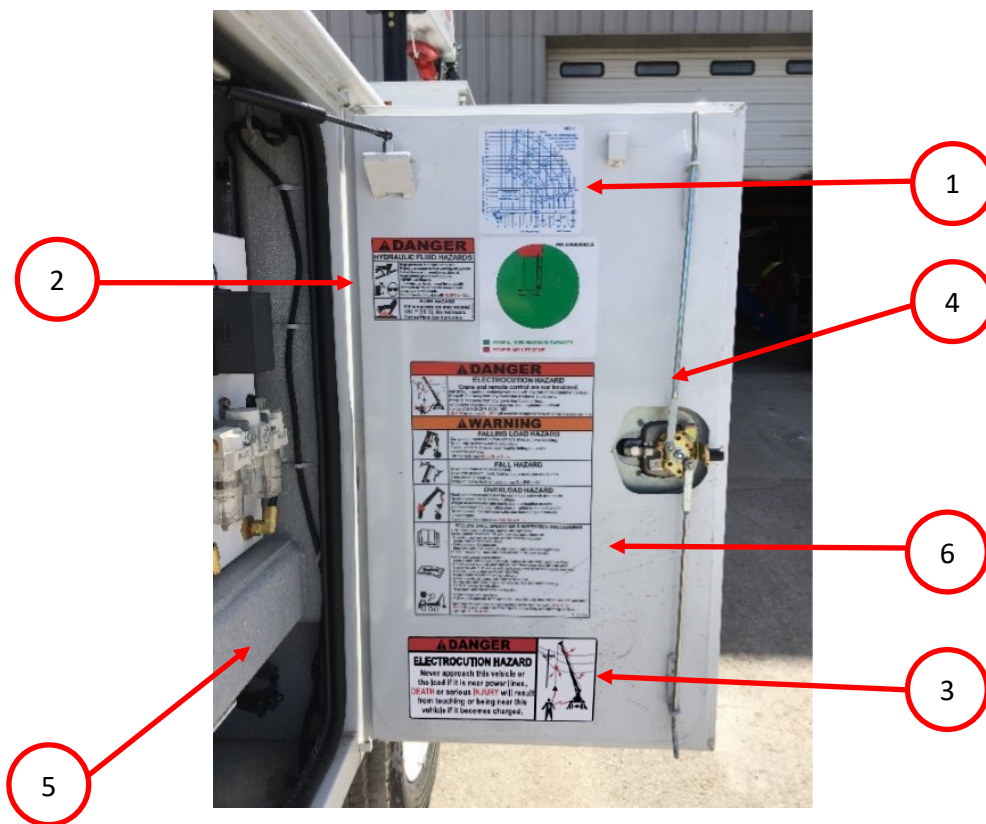
4.0 DECAL PLACEMENT



ITEM NO.	PART NUMBER	DESCRIPTION	QTY.	U/M
1	BDY0016-105	DECAL- FALL HAZARDS	3	EA
2	BDY10016-103	DECAL- ELECTROCUTION HAZARD	4	EA
3	BDY10016-104	DECAL- FALL HAZARD	3	EA
4	BDY10016-114	DECAL- AIR TANK DRAIN	1	EA
5	BDY10016-115	DECAL- EXPLODING AIR TANK	2	EA
6	BDY10016-116	DECAL- WARNING STABILIZER CRUSHING HAZARD	2	EA
7	BDY10016-122	DECAL- FIRE EXTINGUISHER INSIDE	3	EA
8	BDY10016-128	AVOID INJURY (OUTRIGGER)	2	EA
9	BDY10016-106	DECAL- CAUTION WELDING DAMAGE	1	EA



ITEM NO.	PART NUMBER	DESCRIPTION	QTY.	U/M
1	BDY0016-105	DECAL- FALL HAZARDS	3	EA
2	BDY10016-103	DECAL- ELECTROCUTION HAZARD	4	EA
3	BDY10016-104	DECAL- FALL HAZARD	3	EA
4	BDY10016-117	DECAL- HITCH	1	EA
5	BDY10016-121	LEVEL, HOPKINS	1	EA
6	BDY10048	AIR HOSE GUIDE	1	EA
7	BDY10016-120	DECAL - NOT A STEP	1	EA
8	BDY10016-107	DECAL - EQUIP DAMAGE WELDING	1	EA
9	BDY10016-117	DECAL - RECEIVER RATING	1	EA



ITEM NO.	PART NUMBER	DESCRIPTION	QTY.	U/M
1	*	LOAD CHART	3	EA
2	BDY10016-104	DECAL- FALL HAZARD	2	EA
3	BDY10016-123	DECAL- ELECTROCUTION HAZARD	4	EA
4	BDY20071	LOCK MECHANISM 44" DOOR	2	EA
4	BDY20076	LOCK MECHANISM 52" DOOR	2	EA
5	BDY10016-130	DECAL- OUTRIGGER LAYOUT	1	EA
6	BDY10016-108	DECAL - DANGER/WARNING	1	EA

* Load charts do vary depending upon configuration. Contact Call & Information Center for load chart part number. Please provide serial number and crane model.

5. PARTS

TOOL DRAWER STREET SIDE



TOOL DRAWER OVER WHEEL WELL

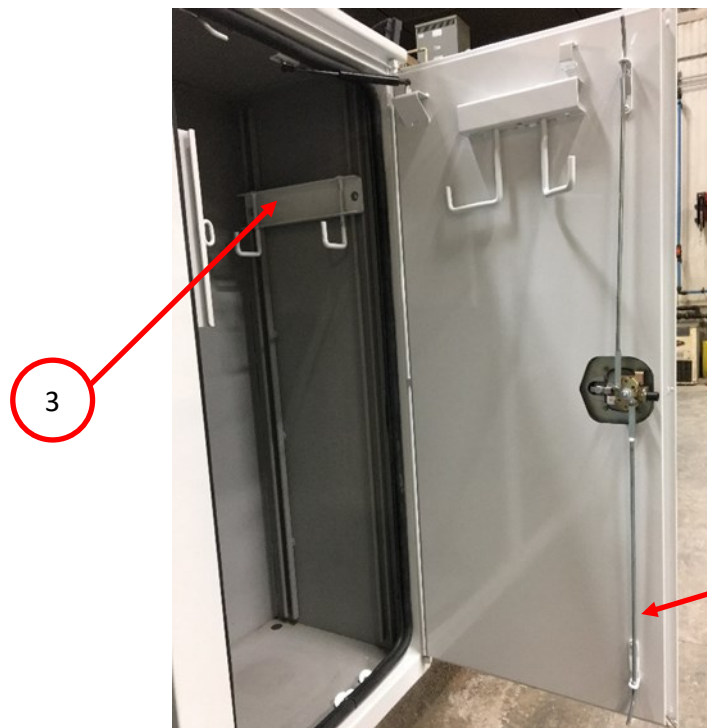


ITEM NO.	PART NUMBER	DESCRIPTION	QTY.	U/M
1	BDY00135	VOYAGER I, TOOL DRAWER SET, RED	2	EA
1	BDY00140	VOYAGER II, TOOL DRAWER SET, RED	2	EA
2	BDY00136	BARN DOOR, TOOL DRAWER WHEEL WELL, RED	2	EA
2	BDY00381	ROLL UP DOORS, TOOL DRAWER WHEEL WELL, RED	2	EA

STREET SIDE REAR COMPARTMENT

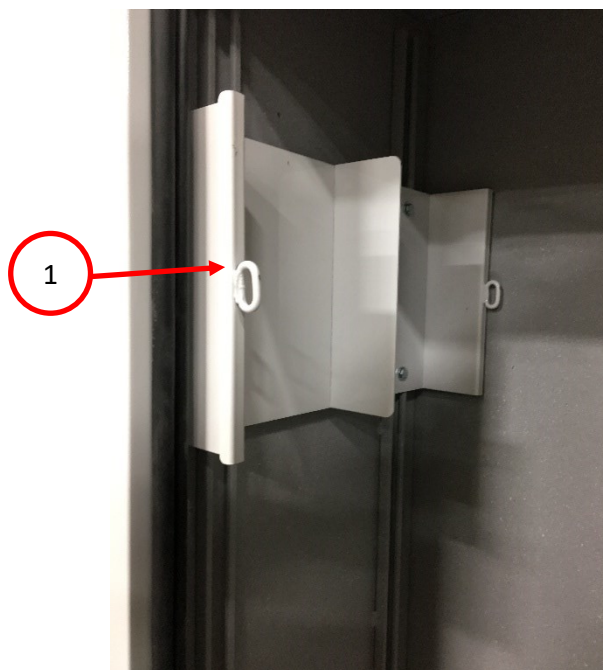


OXY/ACETYLENE COMPARTMENT



ITEM NO.	PART NUMBER	DESCRIPTION	QTY.	U/M
1	BDY20072	LOCK MECHANISM 60", DOOR	4	EA
2	DBY20073	STREET SIDE REAR SHELF	3	EA
3	DBY20074	CORD HANGER, FOR UNISTRUT	1	EA

BOTTLE BRACKET

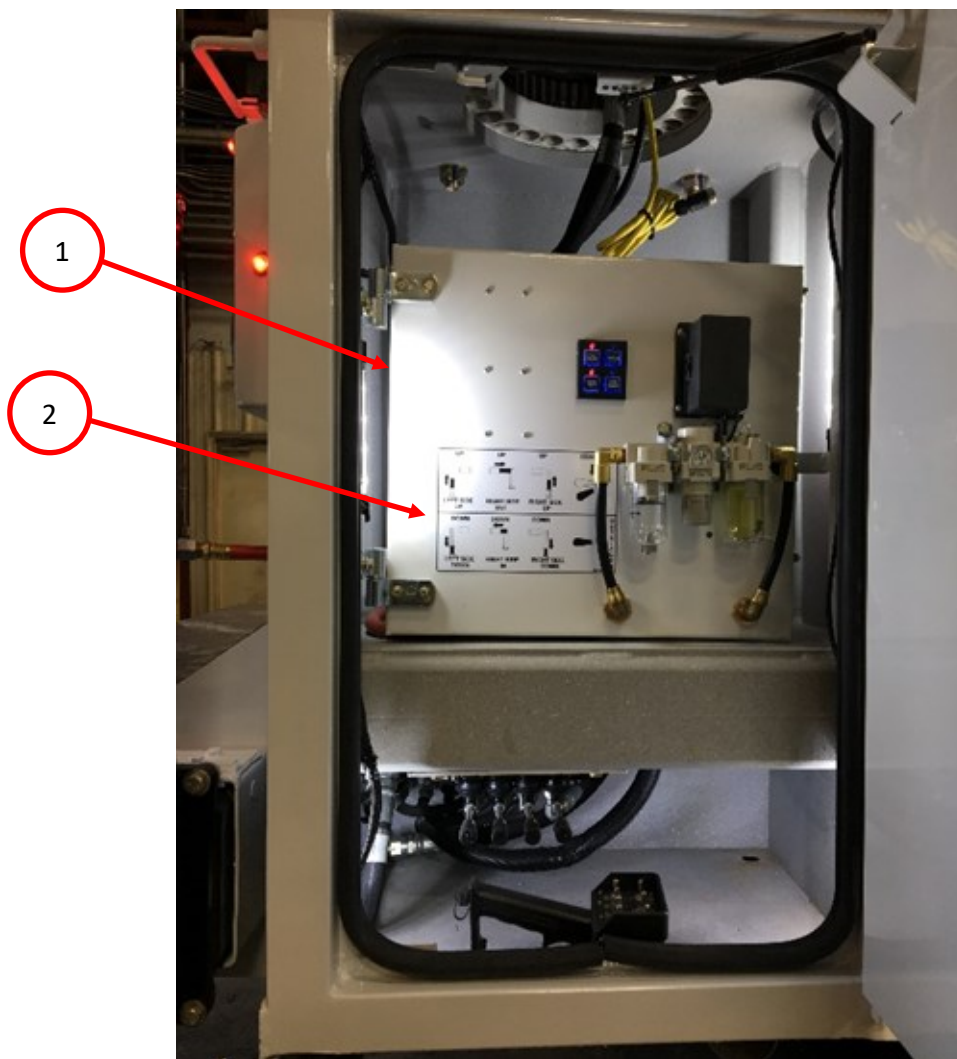


CURB SIDE FRONT SHELVES



ITEM NO.	PART NUMBER	DESCRIPTION	QTY.	U/M
1	BDY20075	BOTTLE BRACKET	1	EA
2	BDY20076	SERIES I CURB SIDE FRONT SHELF	3	EA
2	BDY20077	SERIES II CURB SIDE FRONT SHELF	3	EA
3	BDY20072	LOCK MECHANISM 60", DOOR	3	EA

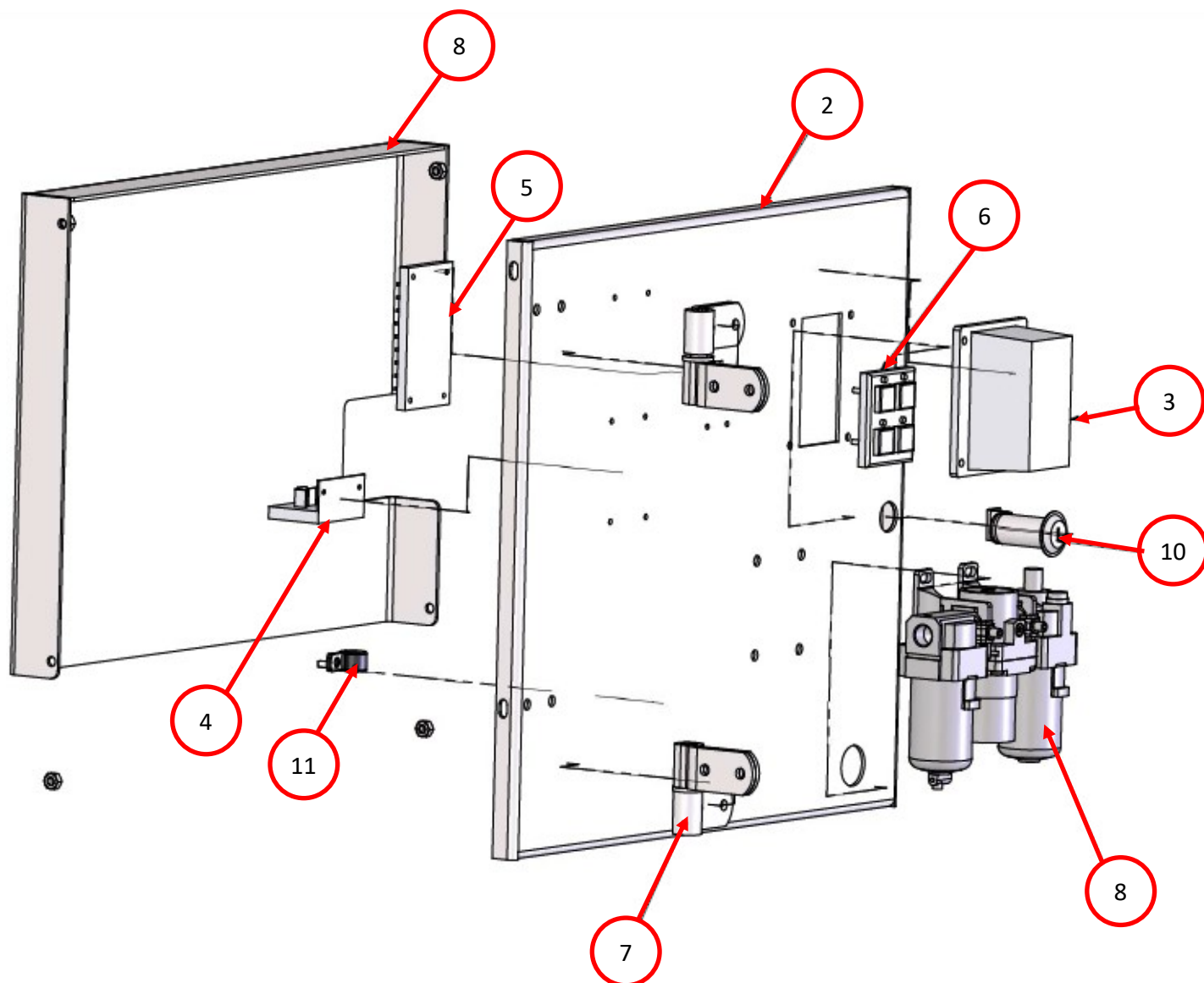
CRANE COMPARTMENT



ITEM NO.	PART NUMBER	DESCRIPTION	QTY.	U/M
1	BDY10032 THRU 4/19	CONTROL PANEL ASSY COMPLETE	1	EA
2	BDY10016-130	DECAL—OUTRIGGER LAYOUT	1	EA

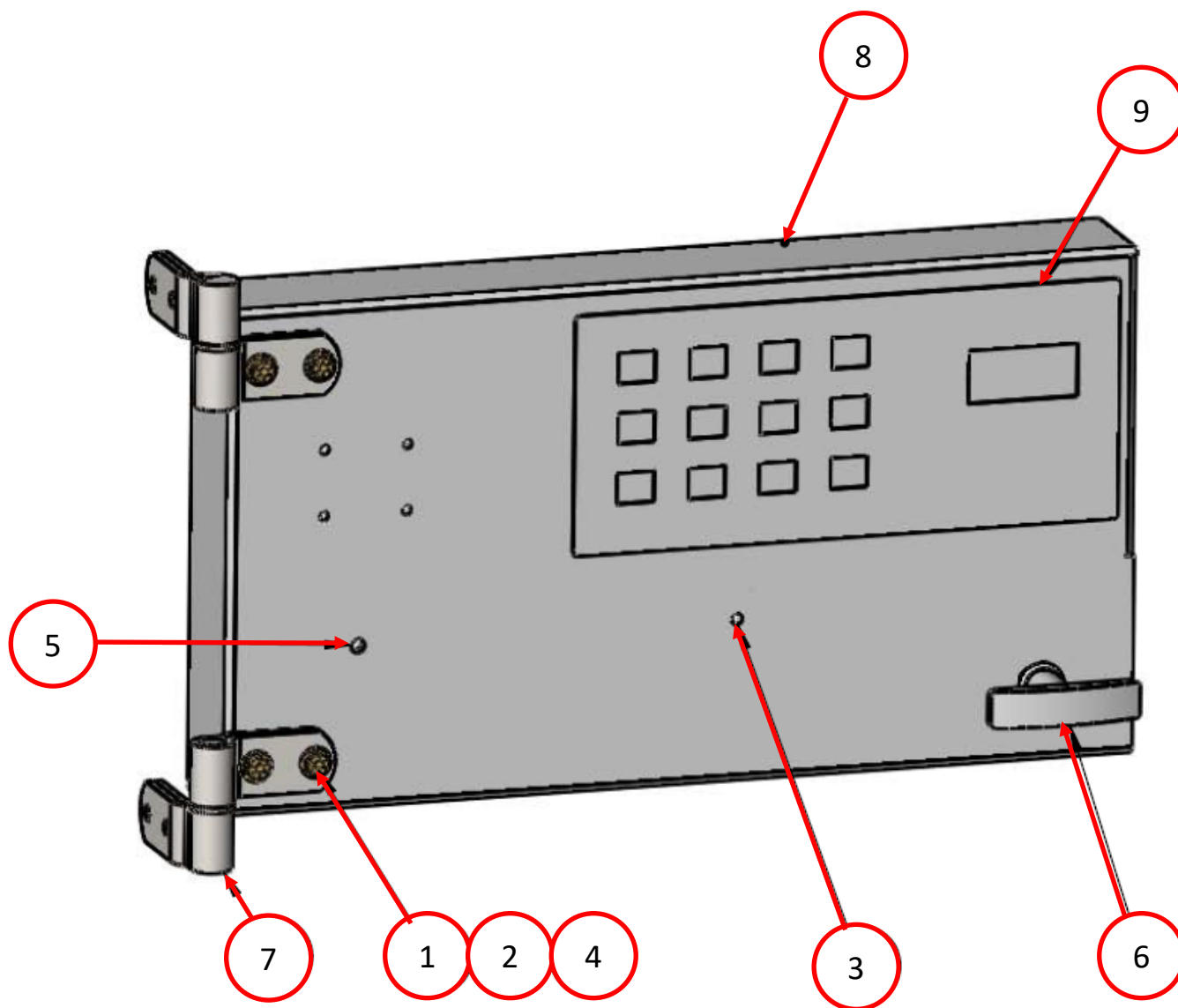
CRANE COMPARTMENT

BDY10032 THRU APRIL 2019



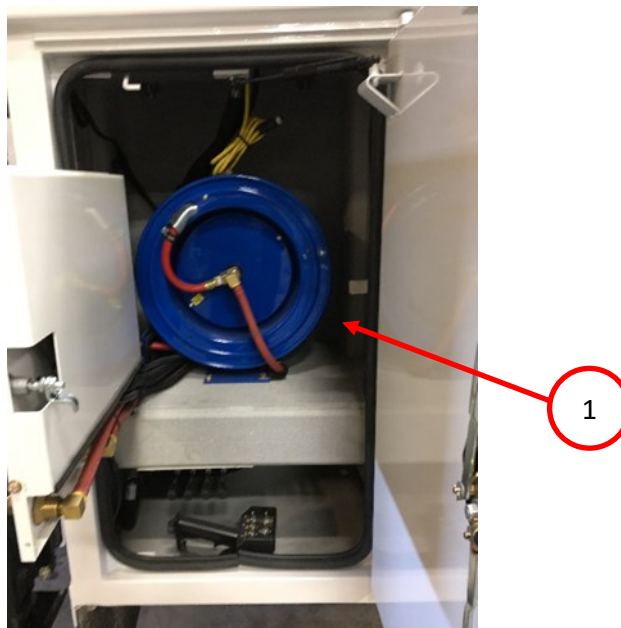
ITEM NO.	PART NUMBER	DESCRIPTION	QTY.	U/M
1	BDY10032 THRU 4/19	CONTROL PANEL ASSY COMPLETE	1	EA
2	BDY10032-01	FRONT PANEL SHEET METAL	1	EA
3	CCA5110	RELAY BOX AND FUSE	1	EA
4	VCMR-01	LATCHING RELAY	1	EA
5	VCMS-SP01 LOWER HALF	SWITCH PANEL 4 POSITION	1	EA
6	VCMS-SP01 UPPER HALF	SWITCH PANEL 4 POSITION	1	EA
7	1151A950	HINGE, ZP	2	EA
8	BDY20042	FILTER/ REGULATOR ASSY	1	EA
9	BDY10032-10	BACK PANEL WLDMT.	1	EA
10	1337A35	SLOTTED CAM LATCH	1	EA
11	8863T14	1/2" LOOP CLAMP	1	EA
12	JB3816-2BK	JUNCTION BLOCK SINGLE POST BLACK	1	EA
13	JB3816-2RD	JUNCTION BLOCK SINGLE POST RED	1	EA

BDY00251 AFTER APRIL 2019



ITEM NO.	PART NUMBER	DESCRIPTION	QTY.	U/M
1	92620A542	HEX CAP SCREW 1/4-20 X 1 YZ GR8	8	EA
2	NNUT-04-20-YZGR8	1/4-20 NYLOCK NUT YZ GR8	8	EA
3	8863T14	1/2" Loop Clamp	1	EA
4	FWSHR-04-YZGR8	1/4 DIA FLAT WASHER YZ GR8	8	EA
5	8863T19	P-CLAMP 1-14" ID X 1 LG	1	EA
6	BDY20032	T HANDLE COMPRESSION LATCH	1	EA
7	1151A950	HINGE, ZP	2	EA
8	BDY00247	CONTROL PANEL WELDMENT	1	EA
9	38029	12 BUTTON KEYPAD	1	EA

HOSE REEL



WHEEL WELL & TRIM



ITEM NO.	PART NUMBER	DESCRIPTION	QTY.	U/M
1	BDY20040	HOSE REEL 1/2" HOSE X 50'	1	EA
2	BDY00169	WHEEL CHOCK TRIM, PRIOR TO 4/19	2	EA
2	1006363	WHEEL CHOCK TRIM, AFTER 4/19	2	EA
3	AUR IMXGT-2055	WHEEL CHOCK	2	EA
4	1003789	PENDULUM, WHEEL CHOCK HOLDER	2	EA

WHEEL WELL RIGHT HAND DOOR

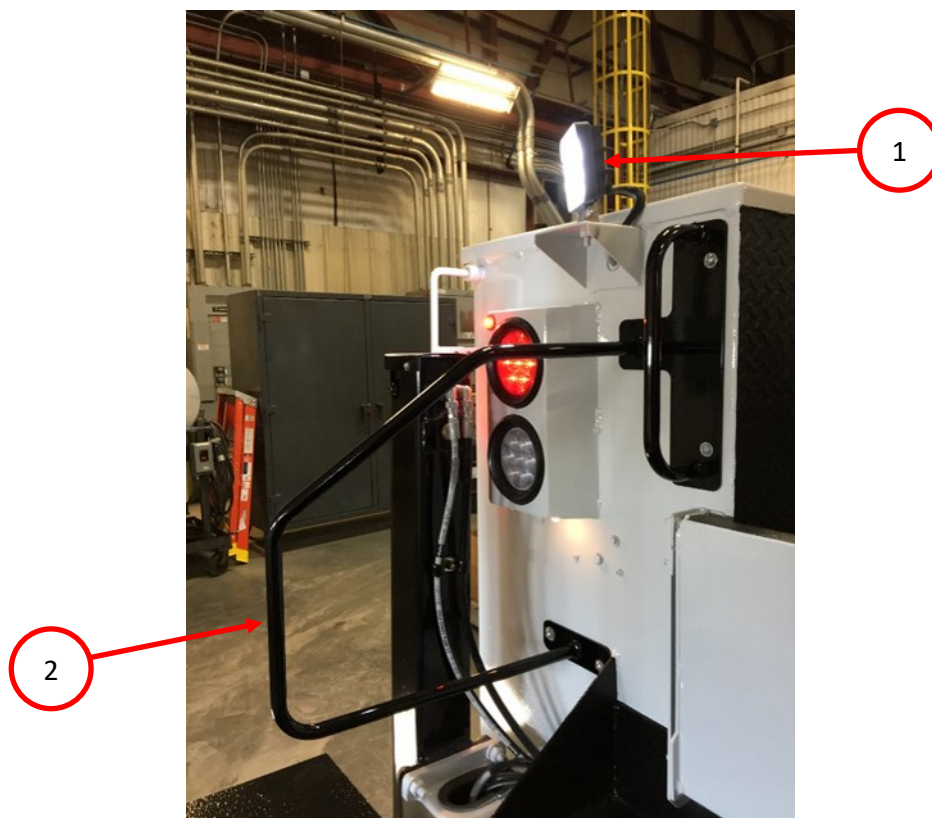


WHEEL WELL LEFT HAND DOOR

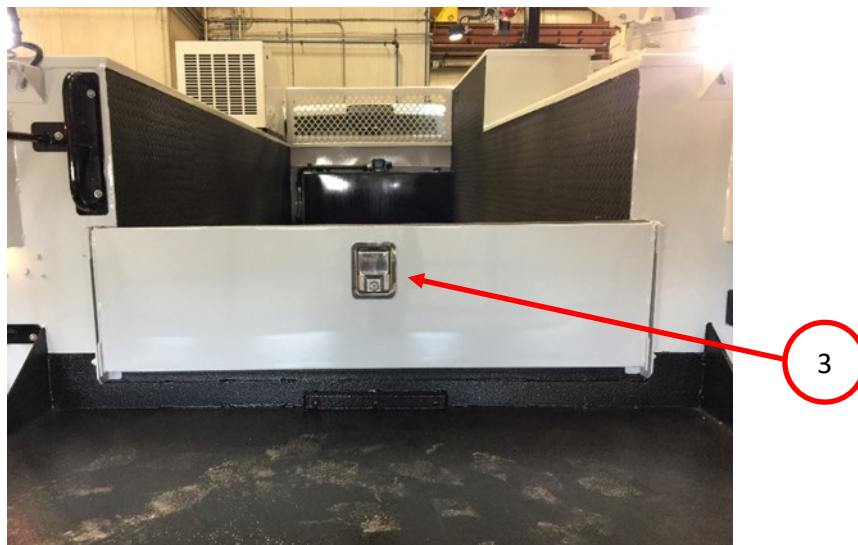


ITEM NO.	PART NUMBER	DESCRIPTION	QTY.	U/M
1	BDY20077	GAS SHOCK	2	EA
2	BDY20078	VOYAGER I, RH WHEEL WELL LATCH	2	EA
2	BDY20079	VOYAGER II, RH WHEEL WELL LATCH	2	EA
3	BDY20080	VOYAGER I, LH WHEEL WELL LATCH	2	EA
3	BDY20081	VOYAGER II, LH WHEEL WELL LATCH	2	EA

TAILSHELF EQUIPMENT

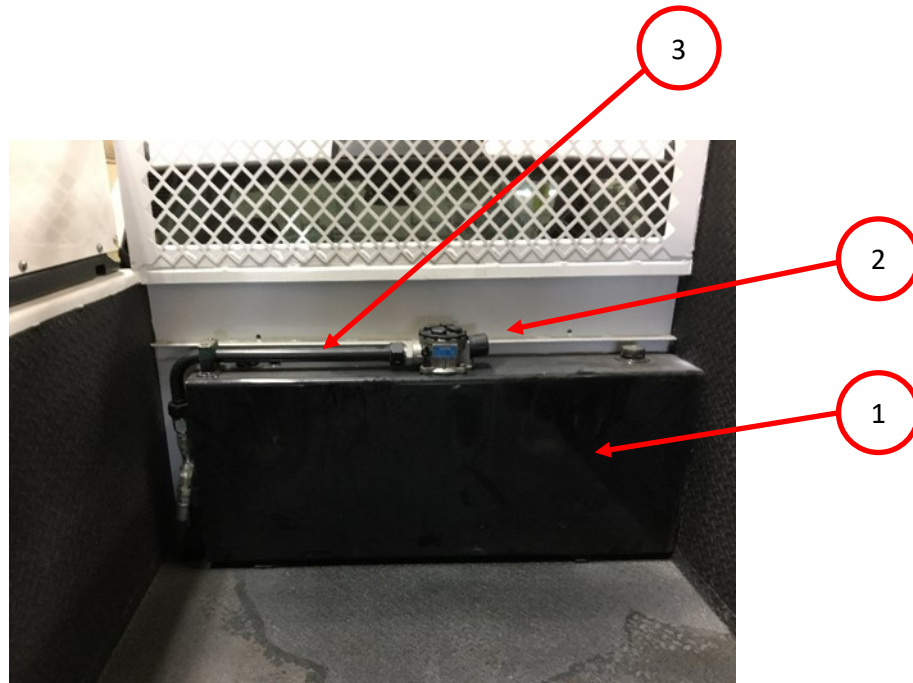


TAILGATE

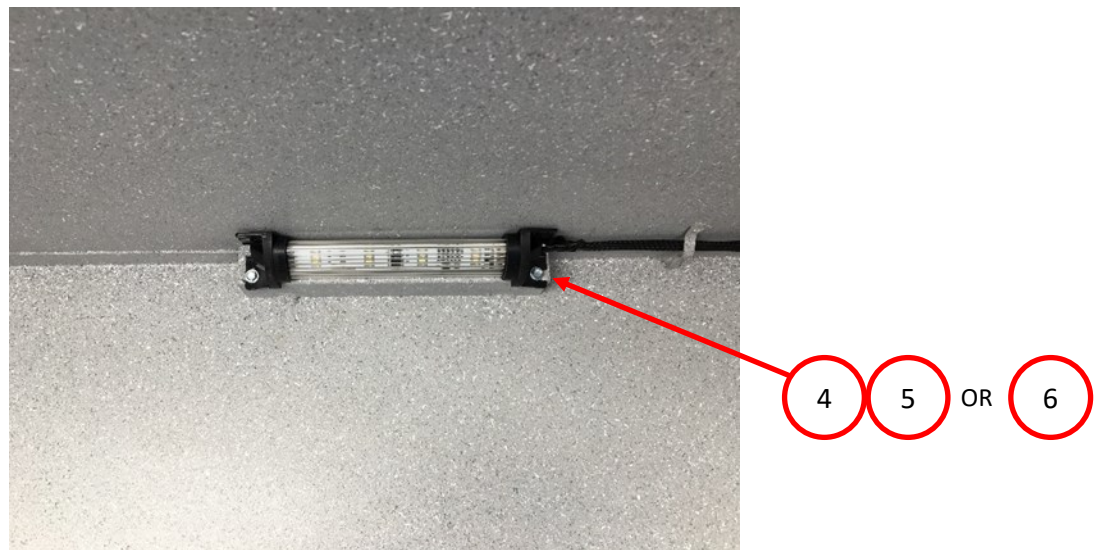


ITEM NO.	PART NUMBER	DESCRIPTION	QTY.	U/M
1	BDY20038	4" x 4" WORK LIGHT	4	EA
2	BDY20882	GRAB HANDLE	1	EA
3	BDY20083	TAILGATE LATCH	1	EA

HYDRAULIC TANK



COMPARTMENT LIGHTS 6", 12" & 18"



ITEM NO.	PART NUMBER	DESCRIPTION	QTY.	U/M
1	QT H11-0003-0528	HYDRAULIC TANK 21 GAL	1	EA
2	BDY20069	HYDRAULIC RETURN FILTER	1	EA
3	BDY00208	TUBE ASSY.	1	EA
4	BDY20035	6" COMPARTMENT LIGHT	AR	EA
5	BDY20036	12" COMPARTMENT LIGHT	AR	EA
6	BDY20037	18" COMPARTMENT LIGHT	AR	EA

BOOM TIP LIGHT



- 1
- 2
- 3
- 4
- 5

BOOM REST



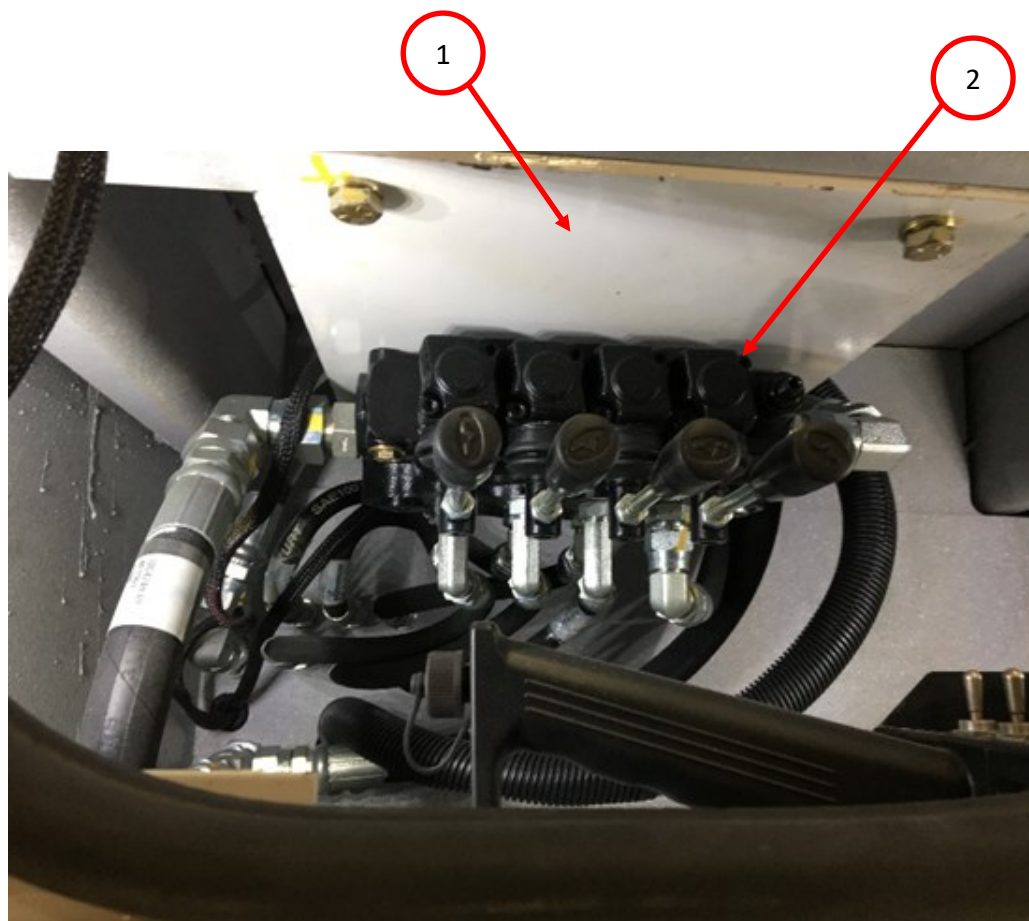
- 6 OR 7

BDY00015 SHOWN

BDY00001 FOR HEX BOOMS

ITEM NO.	PART NUMBER	DESCRIPTION	QTY.	U/M
1	BDY00147	BOOM TIP WORK LIGHT KIT COMPLETE	1	EA
2	BDY00147-01	LIGHTING STANDOFF	1	EA
3	BDY10042	WORK LIGHT SWIVEL MOUNTED	1	EA
4	BDY00147-02	LIGHT MTG. ARM	1	EA
5	BDY20001-08	SLEEVE BEARING 1/2 ID X 3/4 OD X 3/8 W	1	EA
6	BDY00015	BOOM STOW FOR HEX BOOM	1	EA
7	BDY00001	BOOM STOW FOR FLAT BOOM	1	EA

OUTRIGGER CONTROL VALVE



EITEM NO.	PART NUMBER	DESCRIPTION	QTY.	U/M
1	BDY10034	VALVE MOUNTING PLATE, AUTOCRANE	1	EA
1	BDY00293	VALVE MOUNTING PLATE, LOAD KING	1	EA
2	BDY20067	4-SPOOL OUTRIGGER CONTROL VALVE AUTOCRANE	1	EA
2	BDY20009	4-SPOOL OUTRIGGER CONTROL VALVELOAD KING	1	EA

THRU APRIL 2019

AIR COMPRESSOR SYSTEM PARTS



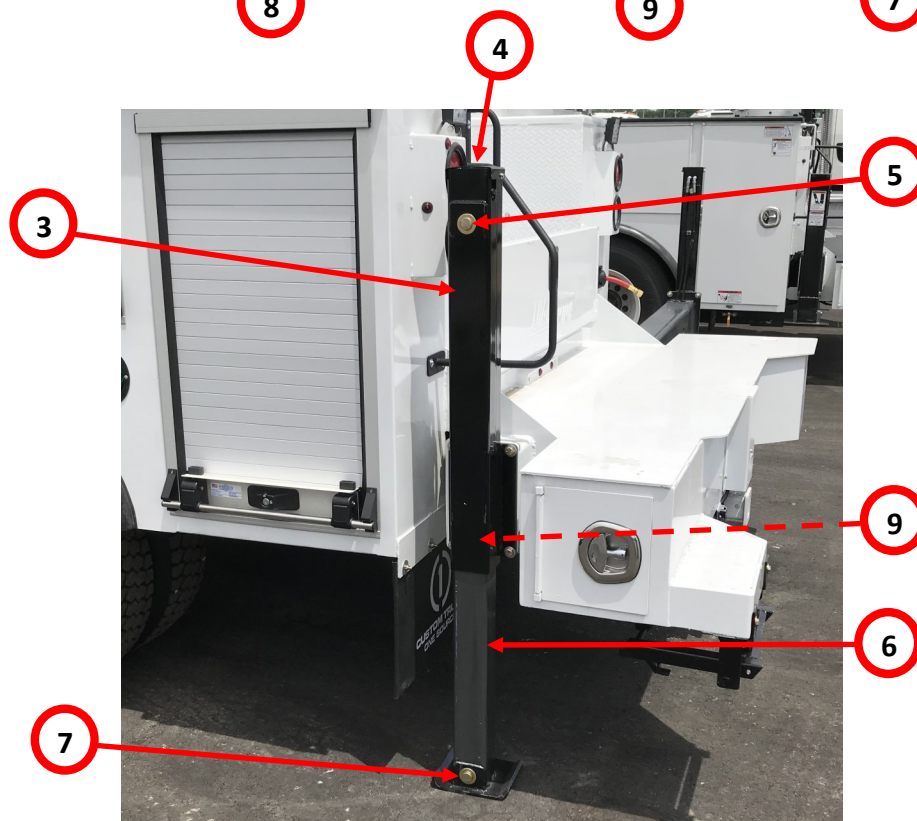
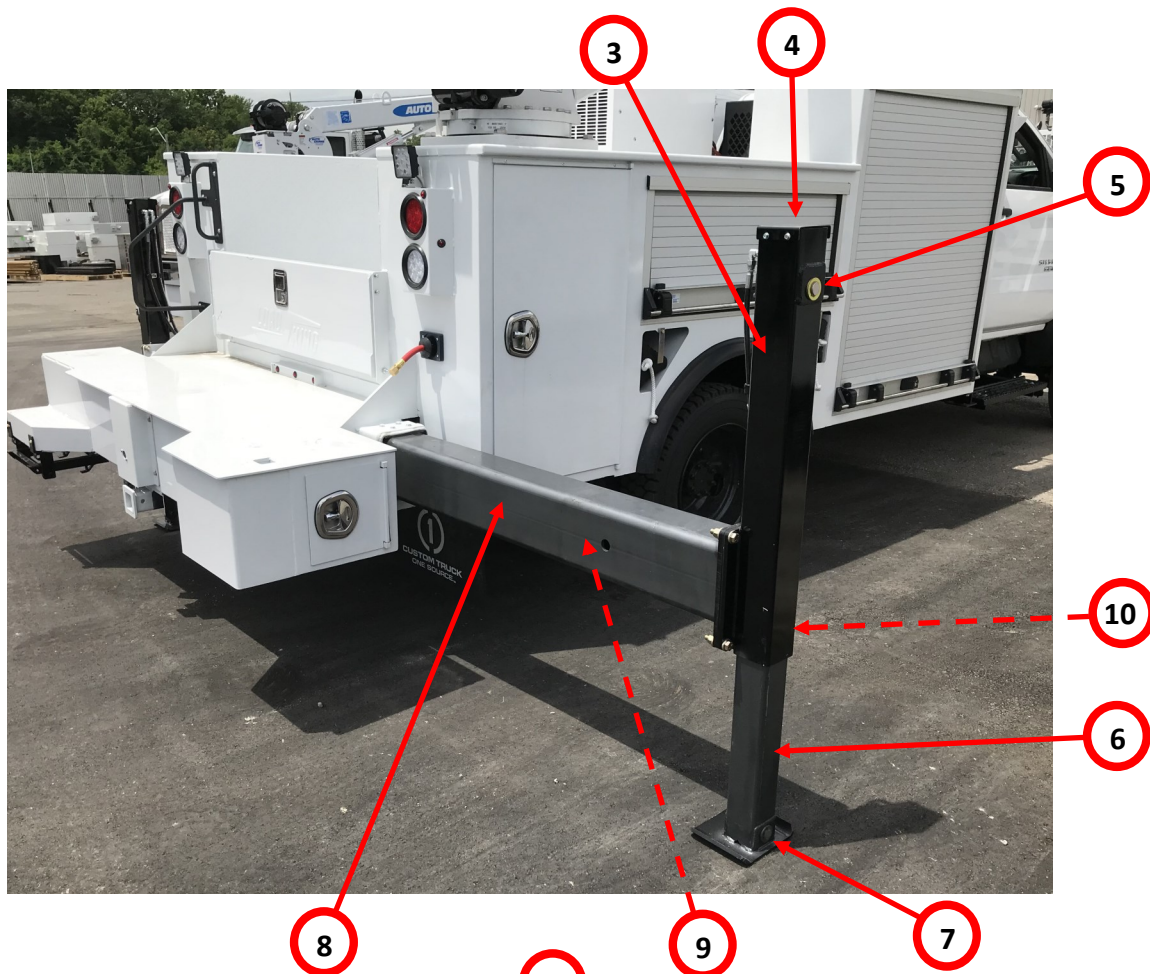
ITEM NO.	PART NUMBER	DESCRIPTION	QTY.	U/M
81	BDY20039	LOAD KING AIR COMPRESSOR 40 CFM	1	EA
82	BDY20041	AIR TANK, 12.3 GAL, 12" x 27.5" (VOYAGER II)	2	EA
83	BDY10051-01	TANK MTG BRKT, LH SERIES II	1	EA
84	BDY10051-02	TANK MTG BRKT, RH SERIES II	1	EA
85	BDY10035	AIR TANK DRAIN ASSY	1	EA
86*	HOS12107	AIR TANK, 12.3 GAL, 12" x 27.5"	1	EA
87*	HOS8052	AIR TANK, 6.2 GAL, 8" x 32"	1	EA

*AIR TANKS VARY ON VOYAGER I

PARTS NOT SHOWN BELOW

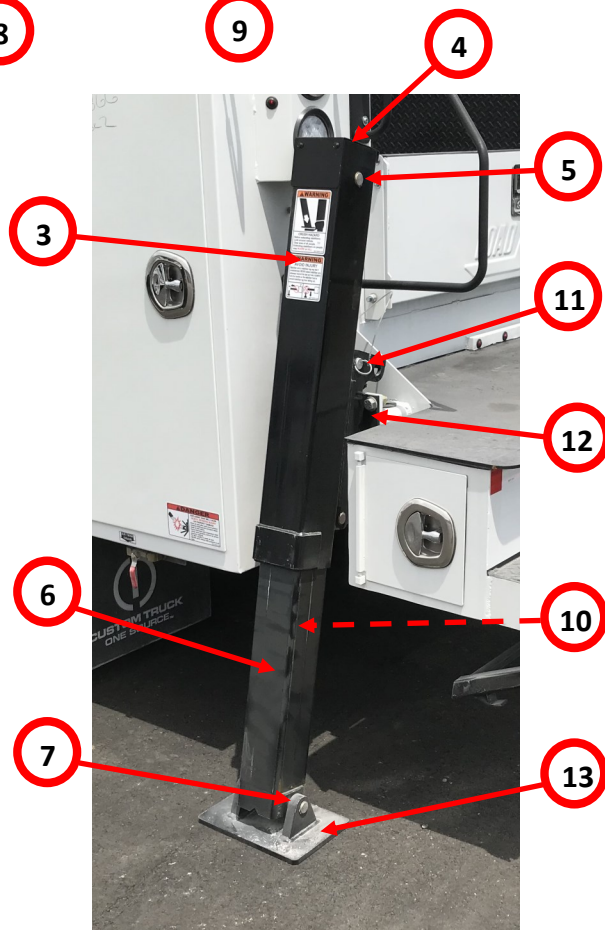
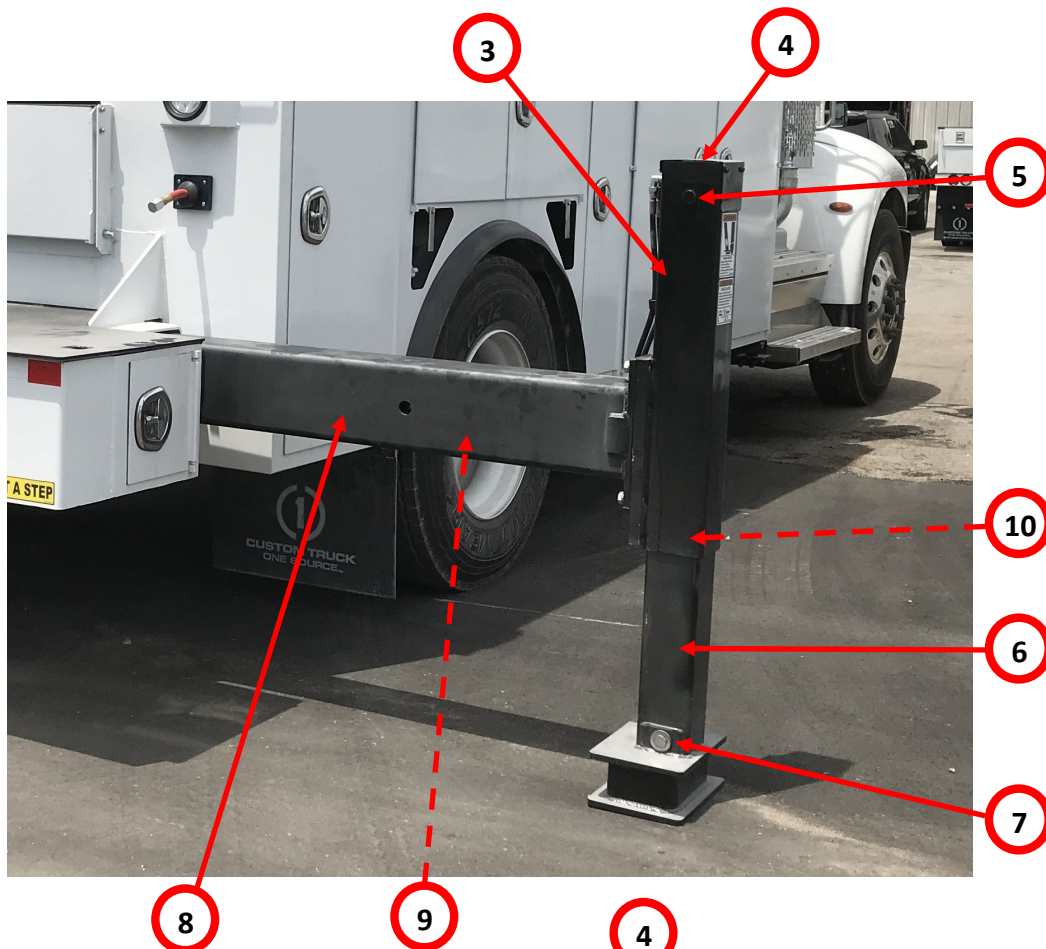
ITEM NO.	PART NUMBER	DESCRIPTION	QTY.	U/M
88	ECC 510	ALARM,BACK-UP, 97DB 12 VDC	1	EA
89	LSC 466425	5LB ABC FIRE EXTINGUISHER	1	EA
90	HBV150	HYDRAULIC TANK BALL VALVE 1-1/2"	1	EA
91	RS1	TRUCK STEPS RETRACTABLE1 RUN	1	EA
92	BC4APD	Brake Controller, Digital, 4 Axle Proportional	1	EA
93	MFW2375	**(PAIR)** MUD FLAP BOLTING PLATES	1	EA
94	RS1	TRUCK STEPS RETRACTABLE1 RUN	1	EA
95	CCA5110	REMOTE RELAY BOX	1	EA
96	BDY00288	WIRE HARNESS 12 BUTTON CONTROL	1	EA
97	054002	7-WAY PLUG SOCKET FOR RV	1	EA
98	054017	BOOT, 7-WAY RECEPTACLE, 593083	2	EA
99	CB-185-80F	MANUAL RESET BREAKER 80AMP	1	EA
100	764A	LIGHT-STROBE-LED	1	EA

TITAN 38 SINGLE SLIDE HYD



ITEM NO.	PART NUMBER	DESCRIPTION	QTY.
1	BDY20114	OUTRIGGER ASSY, CS, COMPLETE	
2	BDY20115	OUTRIGGER ASSY, SS, COMPLETE	
3	BDY20095	UPPER STABILIZER TUBE	
4	BDY20096	TOP CAP	
5	BDY20097	UPPER PIN	
6	BDY20098	LOWER STABILIZER LEG	
7	BDY20099	LOWER PIN	
8	BDY20100	EXTENDING LEG	
9	BDY20101	EXTEND CYLINDER	
10	BDY20102	UPRIGHT EXTEND CYLINDER	

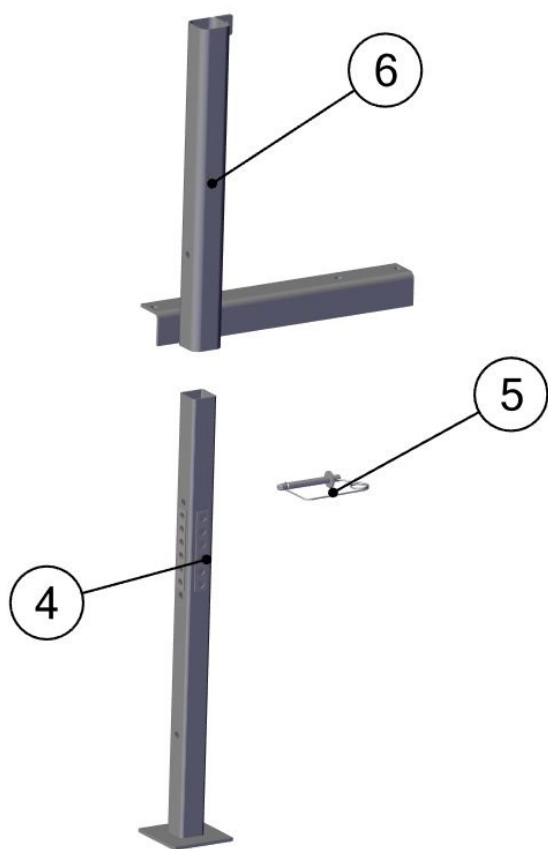
TITAN 60 SINGLE SLIDE HYD



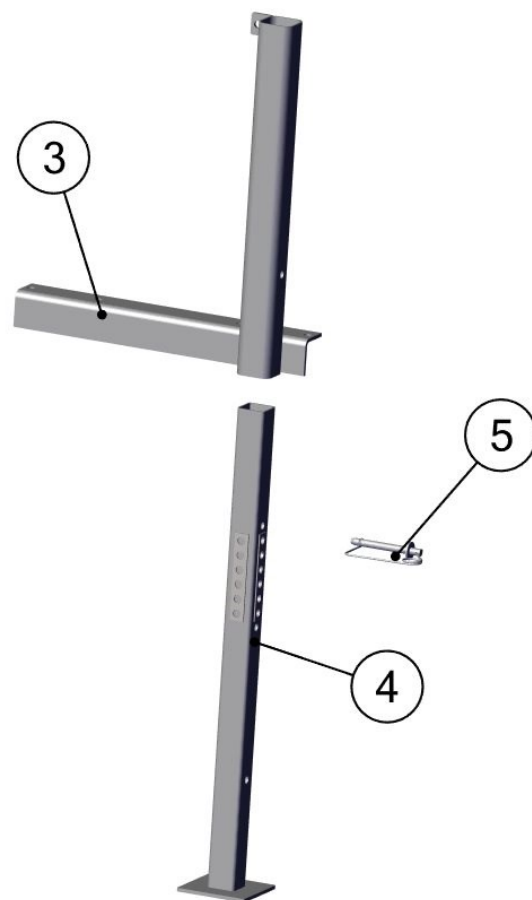
ITEM NO.	PART NUMBER	DESCRIPTION	QTY.
1	BDY20116	OUTRIGGER ASSY, CS, COMPLETE	
2	BDY20117	OUTRIGGER ASSY, SS, COMPLETE	
3	BDY20103	UPPER STABILIZER TUBE	
4	BDY20104	TOP CAP	
5	BDY20105	UPPER PIN	
6	BDY20106	LOWER STABILIZER LEG	
7	BDY20107	LOWER PIN	
8	BDY20108	EXTENDING LEG	
9	BDY20109	EXTEND CYLINDER	
10	BDY20110	UPRIGHT EXTEND CYLINDER	
11	BDY20111	TILT PIN	
12	BDY20112	INNER TILT BRACKET	
13	BDY20113	SWIVEL FOOT	

FRONT OUTRIGGERS

BDY00235 AND BDY00243



BDY00243

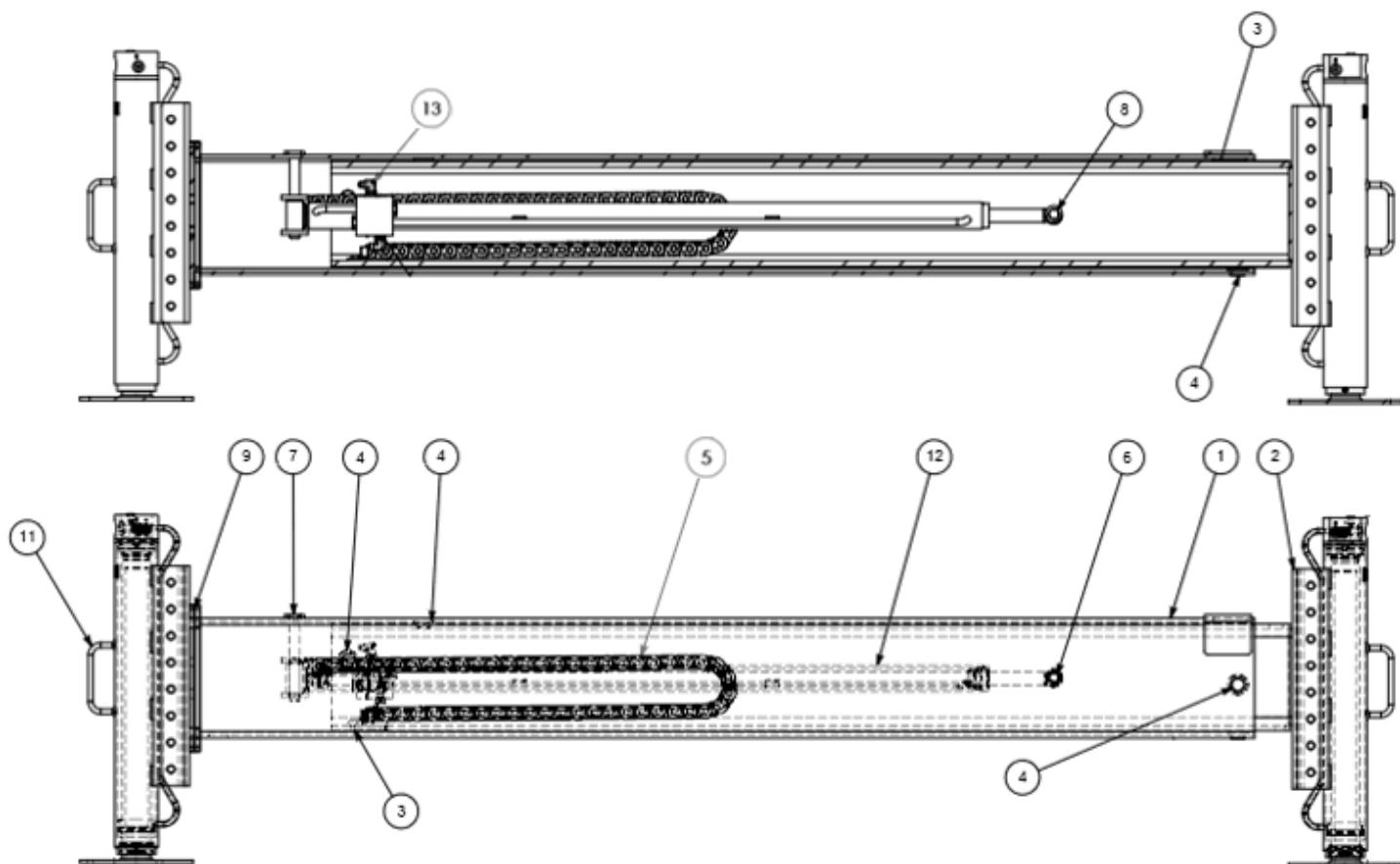


BDY00235

ITEM NO.	PART NUMBER	DESCRIPTION	QTY.
1	BDY00235	MANUAL BOLT-ON STABILIZER SS	1
2	BDY00243	MANUAL BOLT-ON STABILIZER CS	1
3	BDY00234	OUTER LEG, MANUAL STABILIZER	1
4	BDY00233	MANUAL STABILIZER	2
5	BDY20094	LOCKING PIN	2
6	BDY00244	OUTER LEG, MANUAL STABILIZER-CS	1

VOYAGER I LOAD KING OUTRIGGERS

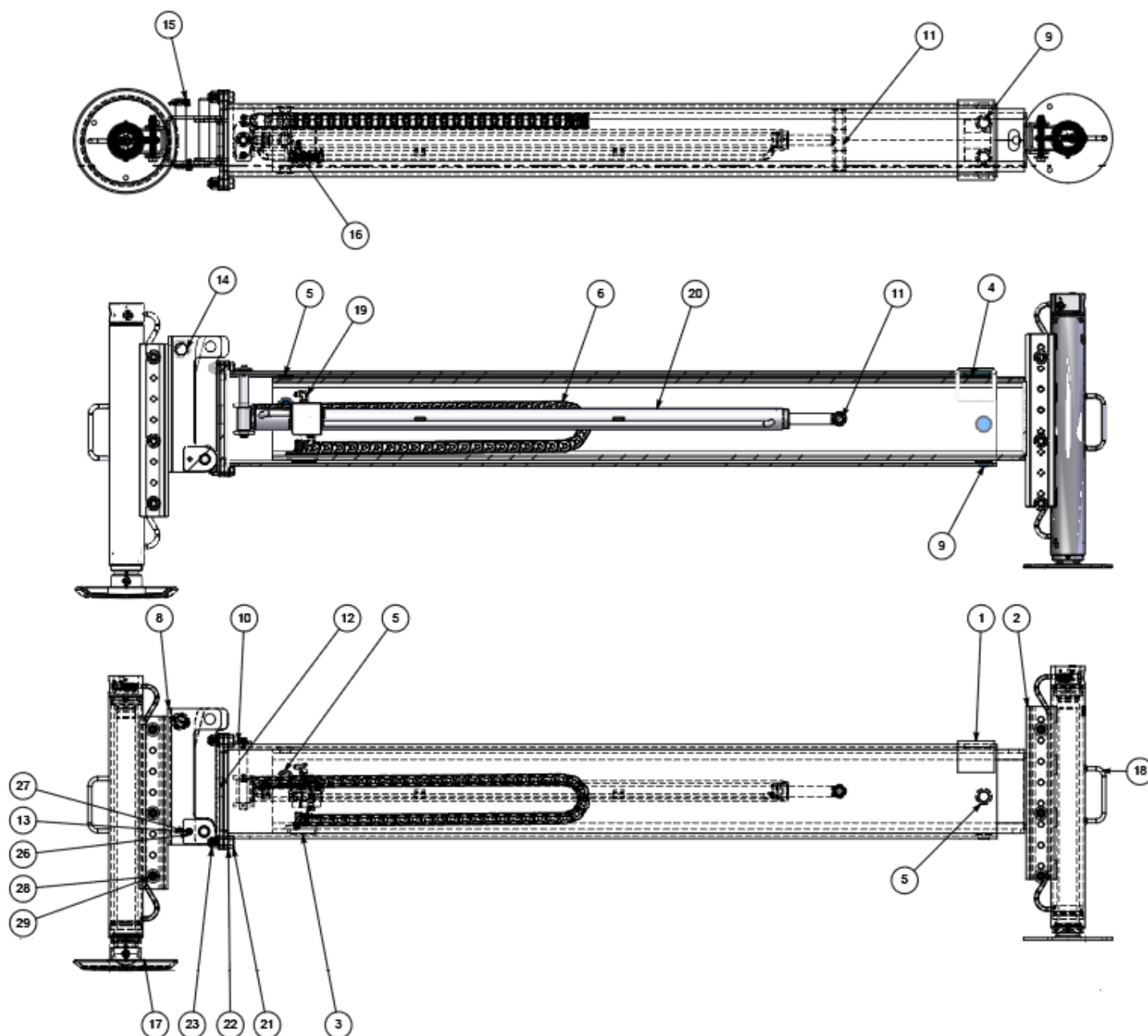
BDY00056



ITEM NO.	PART NUMBER	DESCRIPTION	QTY.
1	BDY00058	OUTRIGGER CENTER TUBE	1
2	BDY00046	EXTENDING LEG WELDMENT O/R	1
3	BDY00048-02	RUB PAD	2
4	BDY00049-01	WALL PUCK	7
5	BDY10030	GORE TRACK SP100-5-INNER-0-60"-2	1
6	98409A181	INTERNAL RETAINING RING 3/4"	2
7	BDY00230	WELDMENT, PIN CYLINDER MOUNTING 3/4" X 6-1/2"	1
8	BDY00050-02	PIN, 3/4 DIA X 5-3/4 LG	1
9	BDY00057	STABILIZER MOUNTING WLDMT	1
10	8863T14	1/2" LOOP CLAMP	2
11	BDY20006-02	STABILIZER LEG 3" X 20"	2
12	BDY10005	EXTEND CYLINDER 1.5" B X 48" STR	1
13	6801-04-06	JIC TO O-RING ELBOW-04MJ X -06 M ORING	2

VOYAGER II LOAD KING OUTRIGGERS

BDY00050



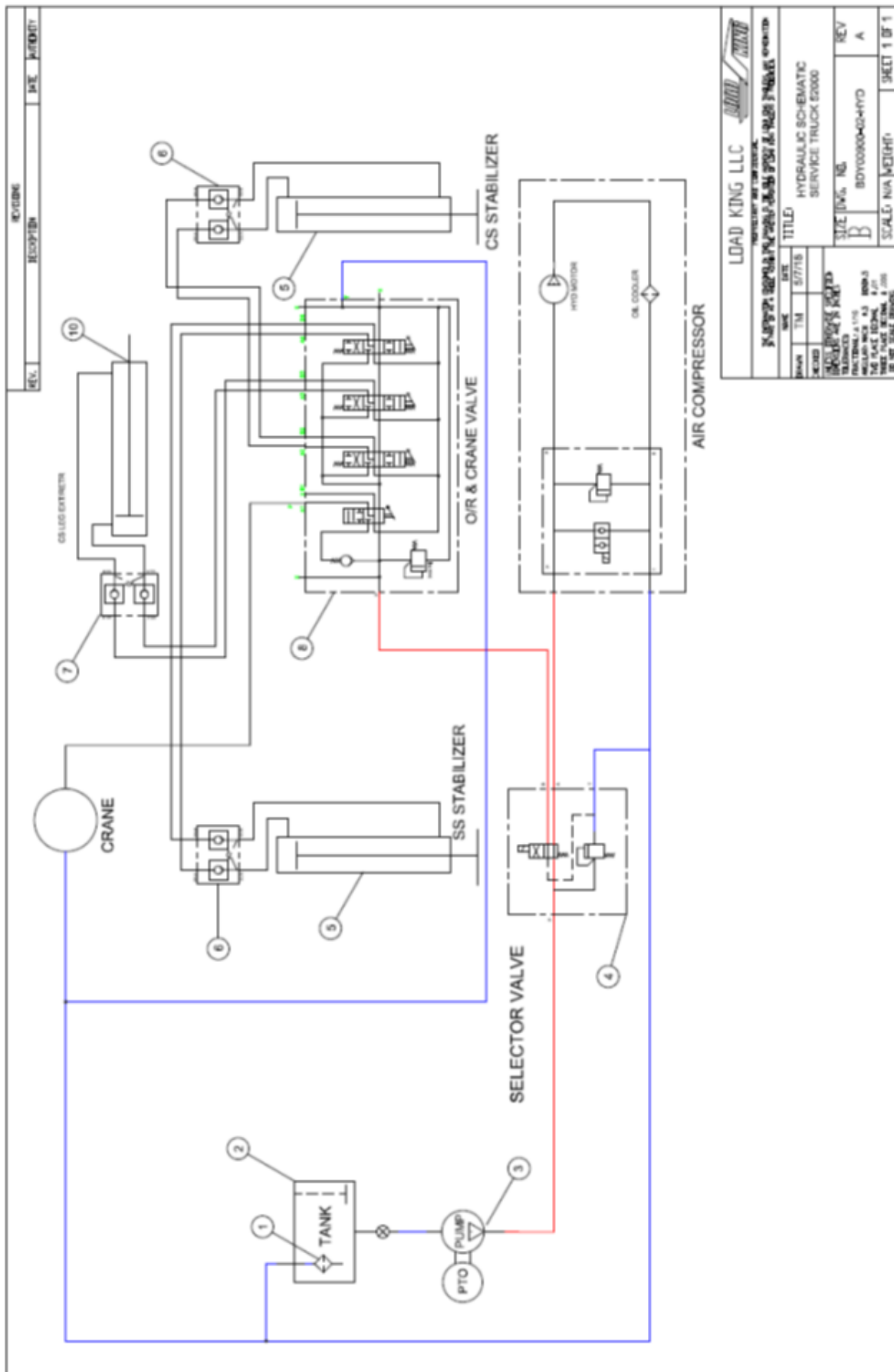
ITEM NO.	PART NUMBER	DESCRIPTION	QTY.
1	BDY00045	OUTRIGGER CENTER TUBE	1
2	BDY00046	EXTENDING LEG WELDMENT O/R	1
3	BDY00048-01	RUB PAD	1
4	BDY00048-02	RUB PAD	1
5	BDY00049-01	WALL PUCK	5
6	BDY10030	GORE TRACK SP100-5-INNER-0-60"-2	1
7	1002463	RETAINING RING, 1" EXTERNAL ZP	4
8	98409A181	INTERNAL RETAINING RING 3/4"	2
9	BDY00055	OUTER TILT BRACKET WLDMT	1
10	BDY00049-04	WALL PUCK	2
11	BDY00230	WELDMENT, PIN CYLINDER MOUNTING 3/4" X 6-1/2"	1
12	BDY00050-02	PIN, 3/4 DIA X 5-3/4 LG	1
13	6801-04-06	JIC TO O-RING ELBOW-04MJ X -06 M ORING	1
14	CVR00124-01	WELDMENT, PIN CYLINDER MOUNTING	1
15	97245A527	CLEVIS PIN	1
16	90170A650	LOCKING PIN	1
17	8863T14	1/2" LOOP CLAMP	1
18	BDY20006-01	STABILIZER LEG 3" X 20" SWIVEL FOOT	2
19	BDY20006-02	STABILIZER LEG 3" X 20"	2
20	6801-04-06	JIC TO O-RING ELBOW-04MJ X -06 M ORING	2
21	92620A812	5/8-11 X 2 HEX CAP SCREW YZN GR8	1
22	FWSHR-10-YZGR8	5/8 DIA SAE FLAT WASHER YZN GR8	2
23	97135A270	NYLON NUT 5/8-11 YZ GR8	1
24	3225T8	1" P-CLAMP	1
25	1000606	LOCKWASHER, SPLIT 1/4" ZP	3
26	92620A542	HEX CAP SCREW 1/4-20 X 1/2 YZ GR8	3
27	1000356	LOCKWASHER, SPLIT 5/16" ZP	2
28	92620A583	5/16-18 X 3/4 HEX CAP SCREW YZ GR8	2
29	HW-FW50	FLAT WASHER 1/2"	2
30	92620A712	HEX CAP SCREW 1/2-13 X 4 YLW ZN GR8	1
31	1003571	NYLOCK NUT 1/2-13 GR 5 ZN	1

REAR ACCESS STEP

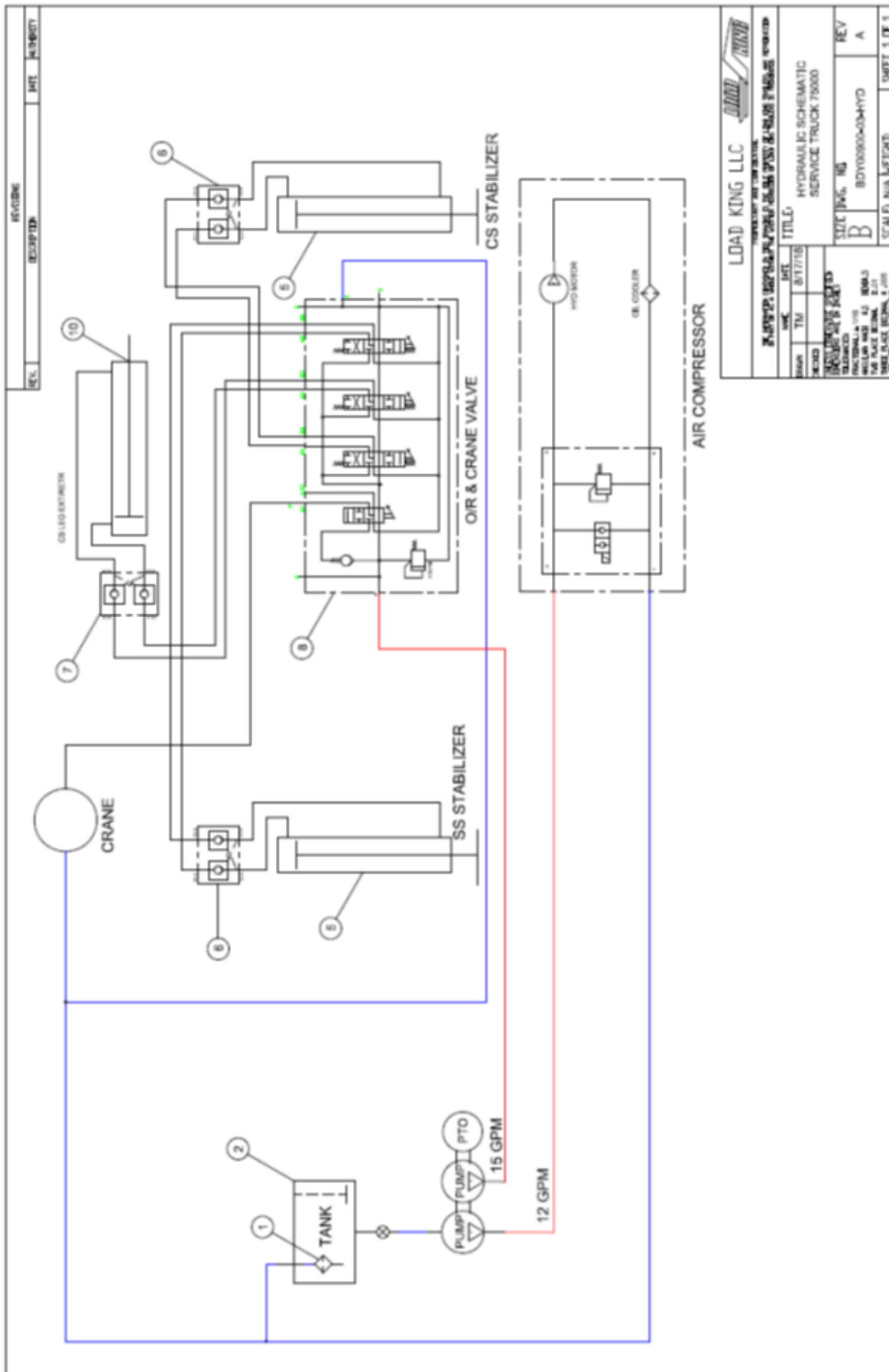


ITEM NO.	PART NUMBER	DESCRIPTION	QTY.
1	RSI	STEP	1

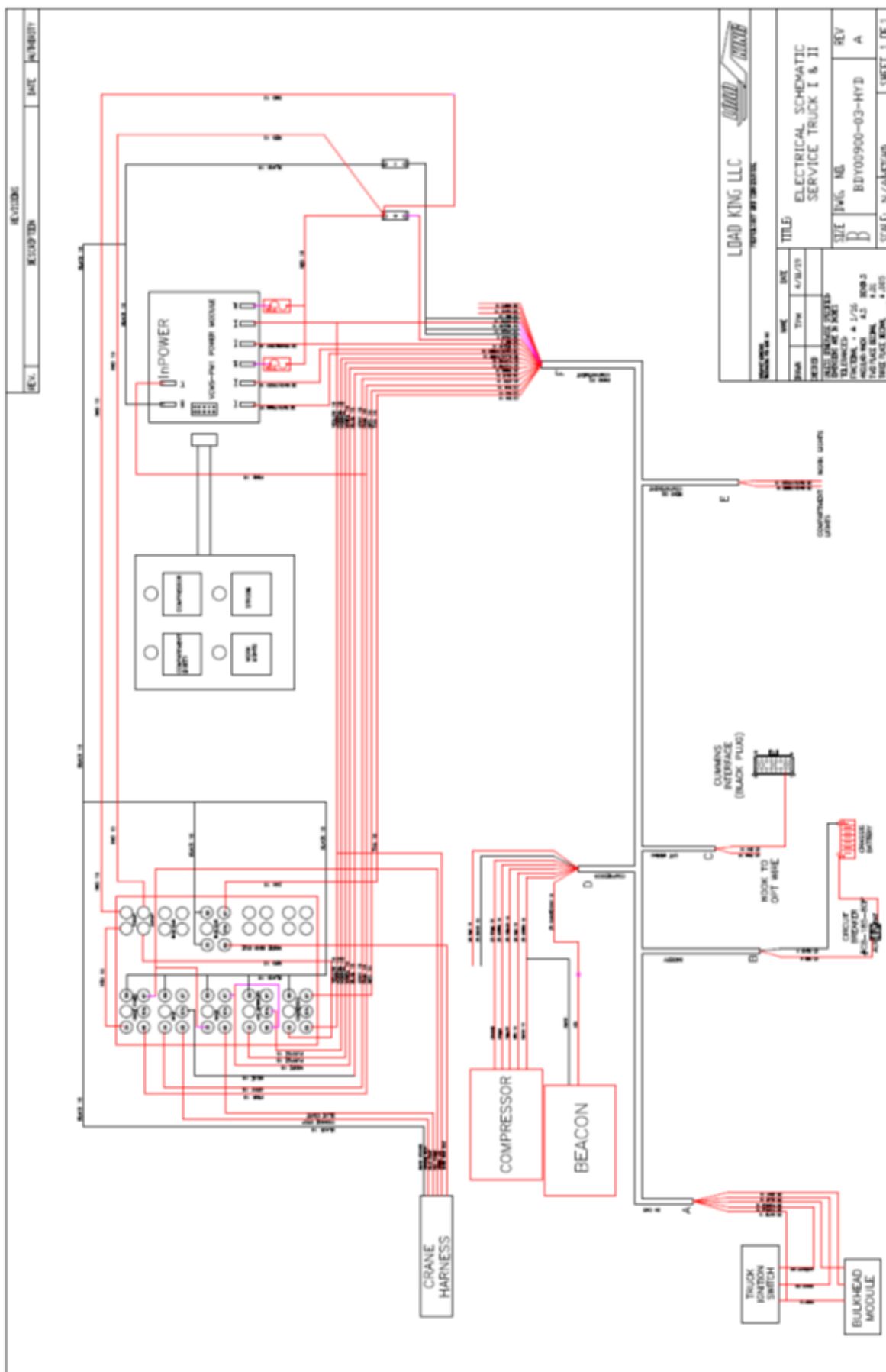
6.0 HYDRAULIC SCHEMATIC VOYAGER I



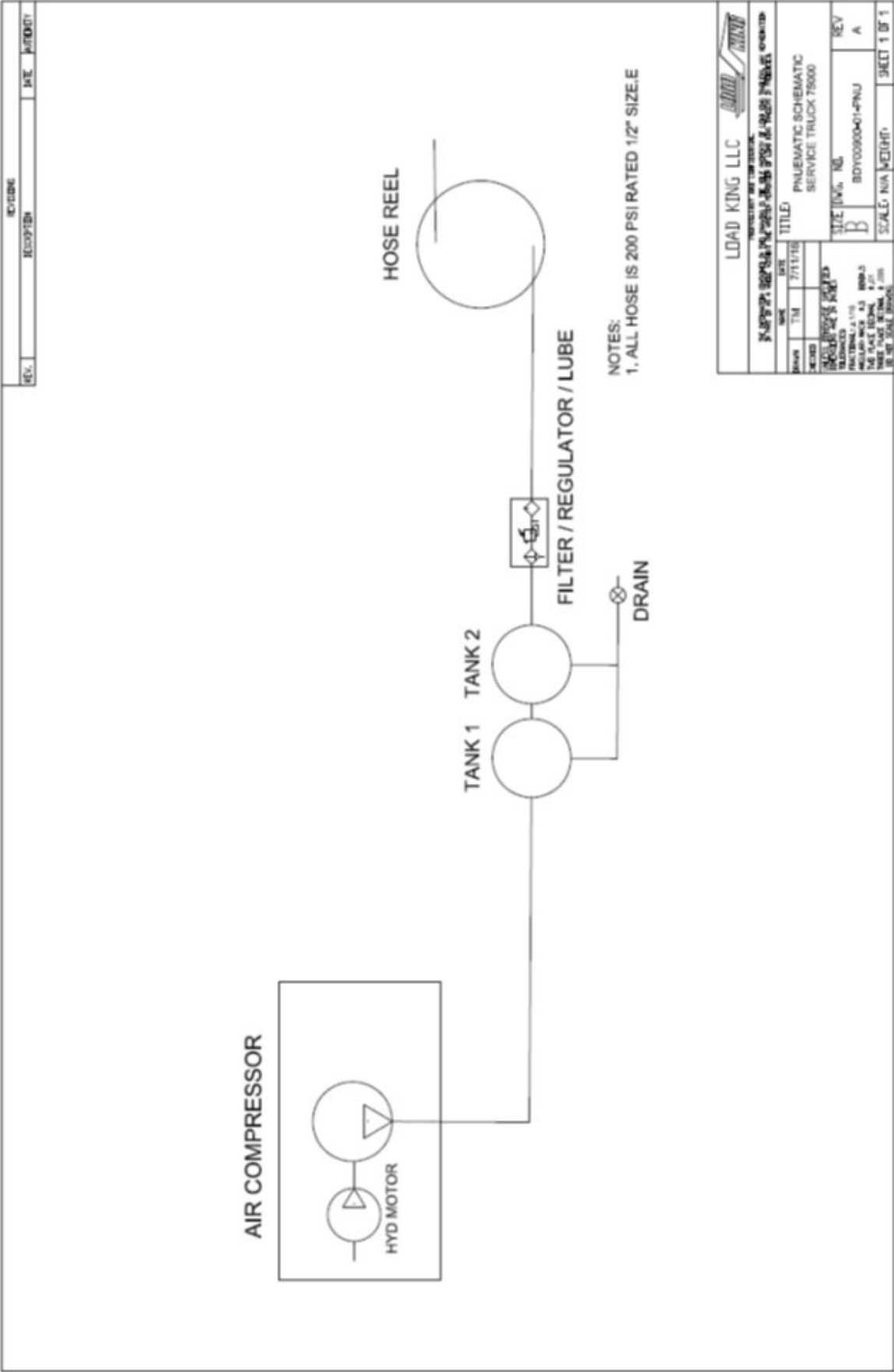
7.0 HYDRAULIC SCHEMATIC VOYAGER II



8.0 ELECTRICAL SCHEMATIC VOYAGER I & II

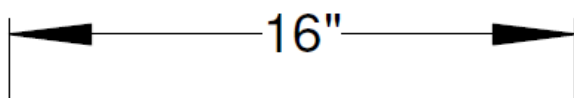


9.0 PNUEMATIC SCHEMATIC



REVISION CONTENT

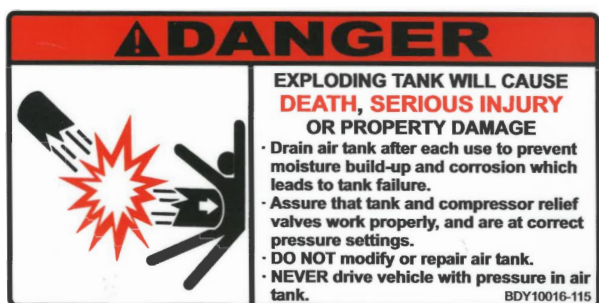
REVISION	DATE	DESCRIPTION	LOCATION
A	04/30/19	INITIAL RELEASE	

10.0 APPENDIX

BDY10016-124 QTY 4



BDY10016-122 QTY 3



BDY10016-115 QTY 2



BDY10016-114 QTY 3



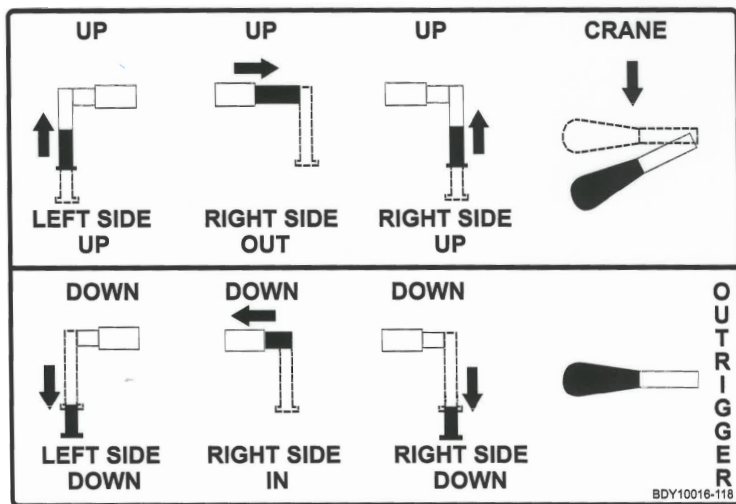
BDY10016-117 QTY 1



BDY10016-225 QTY 1

10.0 APPENDIX**BDY10016-104 QTY 2****BDY10016-105 QTY 3****BDY10016-107 QTY 1****BDY10016-116 QTY 2**

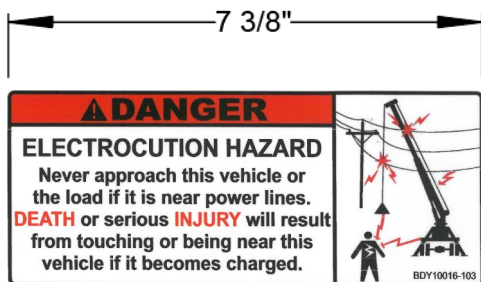
10.0 APPENDIX



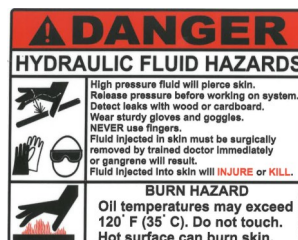
BDY10016-118 QTY 1



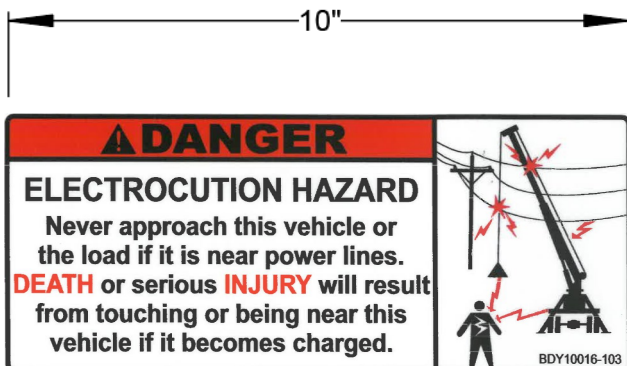
BDY10016-104 QTY 2



BDY10016-103 QTY 1




BDY10016-113 QTY 1



BDY10016-123 QTY 1

10.0 APPENDIX

⚠ DANGER	
	ELECTROCUTION HAZARD Crane and remote control are not insulated. NEVER approach or contact power lines with any part of this equipment or load. Keep 50 feet away from any power line if voltage is unknown. Keep 20 feet away from any power line 350kv or less. Account for swaying motion of power lines, equipment and load. Follow OSHA 29CFR 1926. 1400. DEATH or serious INJURY will result from approaching or contacting a power line.
	⚠ WARNING
	FALLING LOAD HAZARD Always stop operation before contacts sheave. (Two- blocking) Do not rely on limit switch to stop block. If block contacts sheave, lower load by letting out cable. Inspect for damage. Falling loads may INJURE or KILL .
	FALL HAZARD Never use crane to hoist personnel. Never ride on boom, hook, load or any other device attached to crane, boom or loadline. Riding on boom, hook or loadline may INJURE or KILL .
	OVERLOAD HAZARD Read, understand and follow the crane load and work area charts. Do not exceed crane or winch ratings. Weight of accessories attached to boom or loadline must be subtracted from the load rating chart or added to the load weight. Do not exceed manual boom extension load ratings at reduced boom lengths. Overloading the crane may INJURE or KILL .
  	FOLLOW SAFE OPERATING & INSPECTION PROCEDURES Only trained personnel should operate this equipment. Do not operate or service until you have read and understood: - Operation and service manuals supplied with this equipment - Crane load and work area charts - Safety signs and instructions - Employer work rules and applicable government and OSHA regulations Obtain manuals from manufacturer's website or customer service. Follow safe operating procedures: - Keep guards, safety signs and safety features in place and in good condition. - Do not exceed crane or winch ratings. Keep three wraps of loadline on winch. - Use crane with truck level on solid surface and with stabilizers properly deployed. - Operate crane controls slowly and smoothly. - Keep personnel clear of moving stabilizers. - Never operate with personnel under boom or load. - Do not side load boom, drag or swing loads. Keep load under boom tip. - DO NOT operate in high winds. - Stow boom and stabilizers before traveling. Complete required inspections. - Follow the instructions in the operator's manual for daily, frequent and annual inspections. Operating this equipment without knowledge or training may lead to INJURY or DEATH for you or others. Failure to inspect crane or follow safe operating practices may may INJURE or KILL .

BDY10016-108 QTY 2

CAUTION! NOT A STEP

BDY10016-120

BDY10016-120 QTY 1



Load King

PO Box 427

Elk Point, South Dakota, USA 57025-0427

Toll Free: (888) 264-5522