

# Versatility, Innovation, & Power

## THE NEW FASSI F425SE.04 **REDUCED WEIGHT, BETTER LIFT**



### **EVEN STRONGER THAN BEFORE**

Featuring one 10-sided boom, increasing strength and stability compared to the traditional hexagonal-shaped outer boom.

Ultra high-strength steel in the boom structure allows for a higher overall design without affecting the maximum lift.

### **STANDARD CONFIGURATION INCLUDES:**

**New rotation system** with slewing ring and motor reducer

**Lightweight design** compared to previous Fassi 6-story cranes

**Latest safety and control features**

**Flow Sharing** to enable operators to seamlessly engage multiple functions

**Multipower Extension System** to guarantee an exceptional extension/retraction speed of the telescoping booms, all activated by a single control

**Maximum lift:** 9,000 lbs.

**Vertical reach:** 72'

**Horizontal reach:** 61'

### **TRUCK DATA**

**SBA WB:** 275" – 295"

**SFA WB:** 290" – 300"

**20k front axle**

**46k rear tandems**

**13.5k tag or pusher**  
(depending on state laws)

**Full double frame**  
(RBM 3–3.2 million per rail)



**Contact your Fascaan  
dealer for details or visit  
[www.fascaan.com](http://www.fascaan.com)**

**FASCAN**  
INTERNATIONAL, INC.



**(800) 632-7226**

#### **Other optional safety and control features include:**

- Top seat with two digital CAN-bus joysticks
- Digital radio remote
- Outrigger control monitoring
- Zone controls to prevent the boom from moving beyond zones fully supported by outriggers
- LED safety features on outriggers

**See reverse for load charts**

# THE NEW FASSI F425SE.04

**ADC**

Automatic  
Dynamic Control

**control**

**FS**

Flow Sharing

**performance**

**OTC**

Oil Temperature  
Control

**control**

**D900**

Digital Multifunction  
Distributor Bank

**control**

**FX500**

Fassi Electronic  
Control

**control**

**IMC**

Integral  
Machine Control

**control**

**MPES**

Multi Power  
Extension System

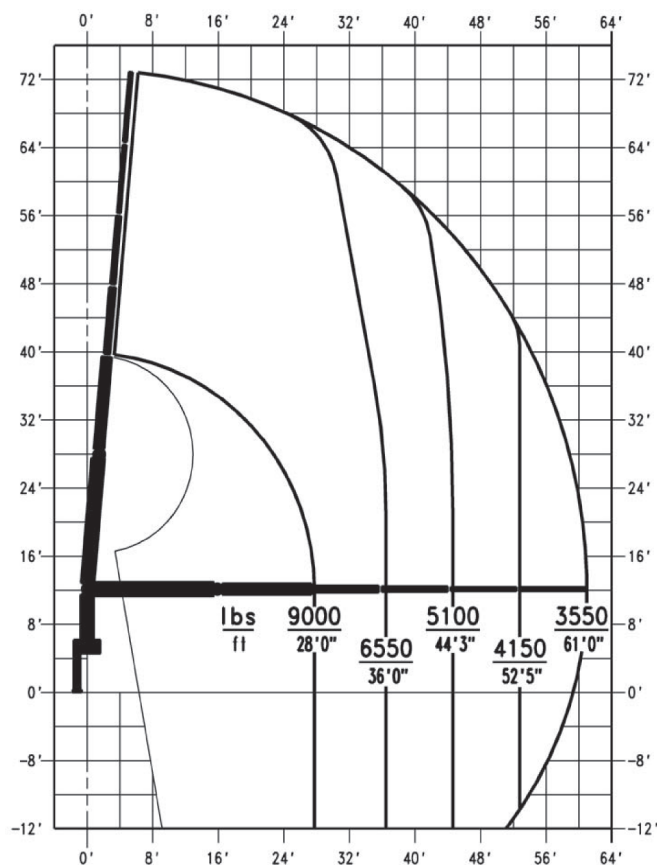
**performance**

**UHSS**

Ultra High  
Strength Steel

**strength**

PLACING CAPACITY CHART WITH LIFTING MOMENT LIMITING DEVICE  
CRANE TYPE  
**F425SE.04**



**DO NOT STAY UNDER SUSPENDED LOADS**

THE WEIGHT OF WALLBOARD FORK AND ROTATOR MUST BE DEDUCTED FROM LIFTING CHART.

DE17745

## TECHNICAL DATA

**F425SE.04**

Lifting capacity	252172 lbs.ft
Standard reach	61'0" ft
Hydraulic extension	32'8" ft
Rotation arc	470°
Rotation torque	36878 lbs.ft
Working pressure	5076 psi
Pump capacity	21-21 gal/min
Oil tank capacity	66 gal
Outriggers spread crane	25'7" ft
Supplementary outriggers	91"
Degree of boom elevator	84°
Weight	10692 lbs

**CERTIFIED  
DYNAMIC  
PERFORMANCE**

Dynamic load diagrams calculated, tested and certified to lift the loads at the declared reaches unless indicated